

SCHEDA TECNICA - Technical Data

LEATHER SOAVE

CARATTERISTICHE TECNICHE Technical Characteristics

Spessore Thickness	0,9/1,0 mm
Superficie media The average size hide is around	4,5-5,0 Mq sqm
Origine Animale Origin	Bovine Bovine
Provenienza Place of Origin	Europea European
Tipo di Concia Tanning	Ai Sali di Cromo Chrome salts
Tipo di Tintura Dyeing	All'anilina passante in botte Aniline through-dyeing
Tipo di Rifinitura Finishing	Pigmenti all'acqua Water based pigments
Tipologia Typology	Mezzo fiore su Bovine stampa Federica Half grain on Bovine printed Federica

TEST FISICI Physical Test

CARATTERISTICHE Characteristics	RIFERIMENTO NORMA Standard Reference	VALORI Limits
Solidità del Colore alla Luce Artificiale Light Fastness xenon lamp	UNI EN ISO 105 B02	Valore > 7 scala dei Blu Value > 7 Blu scale
Resistenza allo strappo Tear Strength	UNI EN ISO 3377-1	37 N/mm
Solidità del Cuoio allo Strofinio a Secco Dry Rub Fastness	ISO 11640	500 cicli valore 4/5 scala dei grigi 500 cycles value 4/5 grey scale
Solidità del Cuoio allo Strofinio a Umido Wet rub Fastness	ISO 11640	250 cicli valore 4 scala dei grigi 250 cycles value 4 grey scale
Solidità del Cuoio alla Flessione Ripetuta Flex Crack Resistance	ISO 5402	> 50.000 cicli > 50.000 cycles
Adesività dello strato di Rifinitura Adhesion of Finish	UNI EN ISO 11644	4,3 N/cm

Certificato n° Z04945/03 - 2019 - Dedalo Srl (Arzignano - VI)

Resistenza al fuoco Fire resistance	British Standard BS 5852 Part I (1979) N° 0: Cigarette Test N° 1: Match Test	Passa
---	---	--------------

Certificato n° Z04945/02 - 2019 - Dedalo Srl (Arzignano - VI)

Resistenza al fuoco Fire resistance	Imo FTP:Part 8-Resolution A.652 (16) NI/0: Cigarette Test NI/1: Match Test	Passa
---	---	--------------

Certificato n° Z04945/01 - 2019 - Dedalo Srl (Arzignano - VI)

Resistenza al fuoco Fire resistance	TB 117-A11@2013:2013 Cigarette Test (California)	Passa
---	--	--------------

Su richiesta l'articolo è disponibile anche con le seguenti normative di reazione al fuoco

On request the article is also available with the following fire reaction regulations

BS 5852 Crib V, UNI 9175 1IM, DIN 4102 B1, FRENCH M1 NF P92 - 507:2004

L'articolo è realizzato nel rispetto della direttiva REACH / Our leather is processed in conformity with REACH regulation

Per motivi tecnici non è possibile garantire la stessa tonalità di colore tra una partita e l'altra

Due to technical reasons it is not possible to guarantee the same color tone from one lot to another

SEVILLA – Light Corrected Semi Aniline

Technical specifications

Average size: 5,2 m²
Thickness: 1,2-1,4 mm

Raw material: Brazilian raw hides
Tanning: Chrome tanned

	Method	Test result
Light fastness	DIN EN ISO 105-B02	≥4
Rubbing fastness, dry, 500 rubbings	DIN EN ISO 11640/11641	4
Rubbing fastness, wet, 100 rubbings	DIN EN ISO 11640/11641	4
Rubbing fastness, sweat, 80 rubbings	DIN EN ISO 11640/11641	4
Finish Adhesion (dry)	DIN EN ISO 11644	≥3N/cm
Flexing indurance	DIN EN ISO 5402-1	20.000
Tearing strenght	DIN EN ISO 3377-2	≥40 N/mm
PH value	DIN EN ISO 4045	≥3,2

Chrome tanned and produced without the use of PCP and CFC which are damaging to the environment. The leather complies with all limits and standards for chrome VI and the REACH declaration.

Flame resistance:

The material fulfills the requirement according to:

UNI EN ISO 1021-1/2

BS 5852 1991 Sec. 4 NI/0-1

California T.B 117-2013 section 1

Nabuk

TEST SOLIDITÀ DEL COLORE *COLOR FASTNESS*

PROPRIETÀ <i>PROPERTY</i>	RIF. NORMATIVO <i>TEST METHOD</i>	PRESTAZIONI <i>PERFORMANCE</i>
Solidità del colore allo strofinio a secco, 50 cicli <i>Dry rub fastness, 50 cycles</i>	EN ISO 11640	≥ 3 Scala dei Grigi <i>Grey Scale</i>
Solidità del colore allo strofinio a umido, 20 cicli <i>Wet rub fastness, 20 cycles</i>	EN ISO 11640	≥ 2 Scala dei Grigi <i>Grey Scale</i>
Solidità del colore allo strofinio con sudore alcalino, 20 cicli <i>Artificial solution rub fastness, 20 cycles</i>	EN ISO 11640 / EN ISO 11641	≥ 2 Scala dei Grigi <i>Grey Scale</i>
Solidità del colore alla luce artificiale <i>Fastness to light</i>	EN ISO 105-B02 (Met. 3)	≥ 2/3 Scala dei Blu <i>Blue Scale</i>
Solidità del colore alla goccia d'acqua - Valutazione dopo 16 ore <i>Color fastness to water drop - Evaluation after 16 hours</i>	UNI EN ISO 15700	≥ 3 Scala dei Grigi <i>Grey Scale</i>

TEST FISICI *PHYSICAL CHARACTERISTICS*

PROPRIETÀ <i>PROPERTY</i>	RIF. NORMATIVO <i>TEST METHOD</i>	PRESTAZIONI <i>PERFORMANCE</i>
Carico di strappo <i>Tear strength</i>	EN ISO 3377-1	> 20 N

L'ARTICOLO È REALIZZATO NEL RISPETTO DELLA DIRETTIVA REACH ED È CONFORME ALL'ULTIMA VERSIONE AGGIORNATA DELLA RSL_DANI
 THE ARTICLE IS MANUFACTURED IN COMPLIANCE WITH THE REACH DIRECTIVE AND COMPLIES WITH THE LATEST VERSION OF THE RSL_DANI

* Test di infiammabilità / *Flammability test*: EN 1021-1, EN 1021-2, B55852:Source 0, B55852:Source 1, Cal TB117, NFPA 260/UFAC

CONSIGLI PER LA PULIZIA E MANUTENZIONE *ADVICES FOR CLEANING AND MAINTENANCE*

Evitare la luce diretta al sole
Avoid any direct exposure to the sun

Spolverare regolarmente la pelle con un panno morbido ed asciutto
Dust regularly with a soft and dry cloth

Evitare l'esposizione a fonti di calore
Keep the leather away from direct heat

CERTIFICAZIONI DI SISTEMA *SYSTEM CERTIFICATIONS*



CERTIFICAZIONI DI PRODOTTO *PRODUCT CERTIFICATIONS*



RICONOSCIMENTI AWARDS



ADERENTE A *JOIN IN*



I COLORI DEL PRODOTTO SONO SOGGETTI A VARIAZIONE, LA LORO DISPONIBILITÀ SARÀ CONFERMATA IN SEDE DI ORDINE.
 PRODUCT COLORS ARE SUBJECT TO CHANGE, THEIR AVAILABILITY WILL BE CONFIRMED AT THE MOMENT OF THE ORDER.

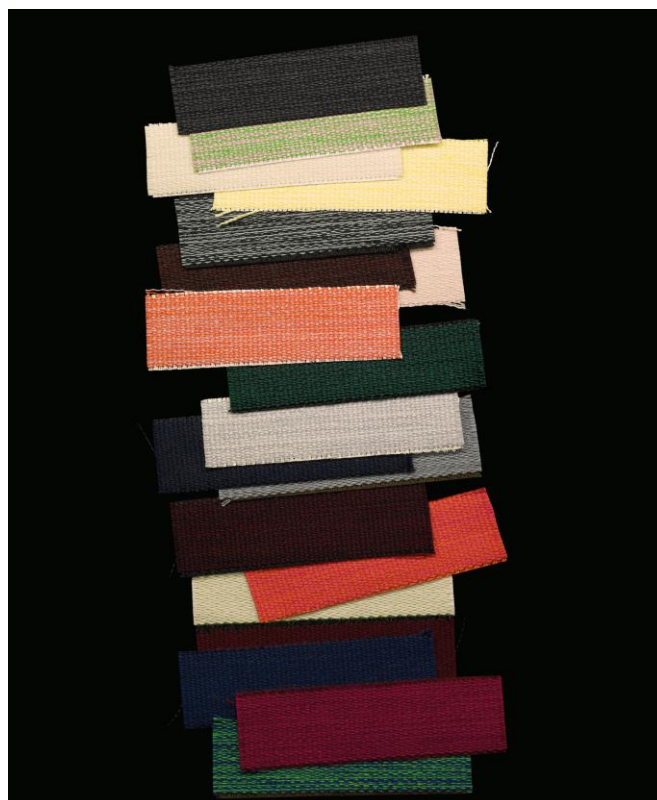


I TEST SONO ESEGUITI NEL RISPETTO DELLE PIÙ RECENTI DISPOSIZIONI. PER VISIONARE L'ULTIMA VERSIONE INQUADRA QUI. TESTS ARE PERFORMED PERIODICALLY IN ACCORDANCE WITH THE MOST RECENT PROVISIONS. TO VIEW THE LATEST VERSION: CLICK HERE.

DANI S.p.A.
 Z.I. Via della Concia, 186
 36071 Arzignano (VI) Italy
 Tel. +39 0444 454111
www.gruppodani.com



KVADRAT/RAF SIMONS



BALDER 3

Design: Raf Simons

Type: Upholstery

Composition: 68% new wool, 26% cotton, 6% nylon

Yarn type: Spun

Binding: Satin

Width: Approx. 140 cm, 55 inches

Weight: Approx. 685 g/lin.m, 22.1 oz/ly

Repeat: None

Cleaning: Vacuum clean frequently, ideally every week.

Remove stains as soon as they occur, with clean warm water or sparkling water. Extraction clean when necessary.

Extraction cleaning might dissolve water-based glue. Pay attention to temperature and amount of cleaning fluid.

Disinfection, see kvadrat.dk

More info: Care and maintenance kvadrat.dk



10 year
warranty



0575/22



Abrasion

Approx. 100.000 Martindale rubs, EN ISO 12947

Abrasion test results exceeding ACT performance guidelines are not an indicator of product lifespan. Multiple factors affect fabric durability and appearance retention

Pilling

Note 4, EN ISO 12945

Seam slippage

Seam parallel to warp: 3.0 mm parallel to weft: 3.0 mm
EN ISO 13 936-2 180 Newton

Lightfastness

Note 5-7 ISO 105-B02

Fastness to rubbing

Dry note 4-5 ISO 105-X12

Wet note 3-5 ISO 105-X12

Absorption

0.65/Class C (flat), 0.90/Class A (waved) EN ISO 354

Airflow

1243 Pa s/m EN 29053

Flame resistance

AS/NZS 1530.3
AS/NZS 3837 class 2
BS 5852 crib 5 with treatment *
BS 5852 part 1
EN 1021-1/2
IMO FTP Code 2010 Part 8
NFPA 260
UNI 9175 1IM
US Cal. Bull. 117-2013

Free from added flame retardant chemicals as standard

** To pass this test flame retardant treatment is necessary.
We are looking into more environmentally friendly alternatives
but for now, the external finisher may use a treatment
containing halogen-based flame retardants
ACT Guidelines Woven fabrics*

Flammability

US Cal. Bull. 117-2013

Dry & Wet Crocking

Dry Crocking: Grade 4.5
Wet Crocking: Grade 4.0

Colour Fastness to Light

Grade 4.5 minimum 40 hours

Physical properties

Pilling Class 4
Breaking Strength warp 121 / weft 284 lbs.
Seam Slippage warp 87 / weft 73 lbs.

Abrasion

100.000 cycles Martindale – High Traffic / Public Spaces

Benefits of wool

Wool is a renewable resource
Wool is very comfortable because of its ability to absorb/
give off humidity
Wool is flame retardant
Wool is biodegradable
Wool is naturally soil resistant
Wool ages with grace

Quality benefits

Complies with Möbelfakta
Very good abrasion
Good lightfastness
Flame retardant

Environmental benefits

Follow the EU Ecolabel dye restrictions incl. AZO dye and heavy metal restrictions
No content of PFCs or 'PFAS'
REACH compliant
Californian Proposition 65 list compliant
LBC Red list compliant
Healthier Hospitals compliant

Green building certificates

Greenguard Gold: Low chemical emission
Environmental Product Declaration (EPD): Based on a LCA following EN 15804 and follow the standard of ISO 14040
Health Product Declaration (HPD): Declaring textile content and substance

Country of origin

Norway

Warranty

10 years. See terms and conditions on kvadrat.dk

Kvadrat packaging and cardboard is recyclable. Cardboard material is FSC certified and / or contains recycled content.

For further information
kvadrat.dk



Canvas 2

Abrasion

Approx. 100.000 Martindale rubs, EN ISO 12947

Abrasion test results exceeding ACT performance guidelines are not an indicator of product lifespan. Multiple factors affect fabric durability and appearance retention

Pilling

Note 4 EN ISO 12945

Seam slippage

Seam parallel to warp: 3.5 mm parallel to weft: 2.0 mm
EN ISO 13 936-2 180 Newton

Lightfastness

Note 5-6 ISO 105-B02

Fastness to rubbing

Dry note 4-5 ISO 105-X12
Wet note 4-5 ISO 105-X12

Absorption

0.60/Class C (Flat), 0.80/Class B (Waved) EN ISO 354

Airflow

849 Pa s/m EN 29053

Flame resistance

AS/NZS 1530.3
ASTM E84 Class A Adhered
ASTM E84 Class A Unadhered
BS 5852 crib 5 with treatment *
BS 5852 ignition source 3
BS 5852 part 1
EN 1021-1/2
EN 13501 B-s2, d0 wrapped, with treatment *
IMO FTP Code 2010 Part 8
NF D 60 013
NFPA 260
ÖNORM B1/Q1
SN 198 898 5.2 with treatment *
UNI 9175 1IM
US Cal. Bull. 117-2013

Free from added flame retardant chemicals as standard

** To pass this test flame retardant treatment is necessary. We are looking into more environmentally friendly alternatives but for now, the external finisher may use a treatment containing halogen-based flame retardants*

Canvas 2

Design: Giulio Ridolfo

Type: Upholstery

Composition: 90% new wool, 10% nylon

Yarn type: Worsted

Binding: Plain variant

Width: Approx. 140 cm, 55 inches

Weight: Approx. 480 g/lin.m, 15.4 oz/ly

Repeat: None

Colour difference may occur

Cleaning: Vacuum clean frequently, ideally every week. Remove stains as soon as they occur, with clean warm water or sparkling water. Extraction clean when necessary. Extraction cleaning might dissolve water-based glue. Pay attention to temperature and amount of cleaning fluid.

Disinfection, see kvadrat.dk

More info: Care and maintenance kvadrat.dk



10 year
warranty





Mosaic 2

Abrasion

Approximately 100.000 Martindale rubs EN ISO 12947

Pilling

Note 4-5 EN ISO 12945

Lightfastness

Note 6-7 ISO 105-B02

Fastness to rubbing

Dry note 4-5 ISO 105-X12

Wet note 4-5 ISO 105-X12

Flame resistance

BS 5852 Part 1

DIN 4102 B2

EN 1021-1/2

IMO FTP Code 2010:Part 8

US Cal. Bull. 117-2013

Quality benefits

Very good abrasion

Very good lightfastness

Flame retardant

Washable

Benefits of wool

Wool is a renewable resource

Wool is very comfortable, because of its ability to absorb/give off humidity

Wool is flame retardant

Wool is biodegradable

Wool is naturally soil resistant

Wool ages with grace

Environmental benefits

No use of AZO dyes, which may split off carcinogenic acryl amines

No use of dyes containing more heavy metals than allowed

No content of formaldehyde

No use of brominated flame retardants

Complies with REACH regulation

For further information

kvadrat.dk

Mosaic 2

Design: Febrik

Type: Knitted upholstery

Composition: 27% wool, 9% polyamide, 12% polyester, 6% elastane, 46% polyester filling

Yarn type: Worsted

Binding: Knitted

Width: app 140 cm

Weight: app. 1080 g/lin.m

Repeat: none

Cleaning: Vacuuming and dry cleaning

Washable at 30°C if loose covers. Drip drying.

Shrinkage app. 2%.

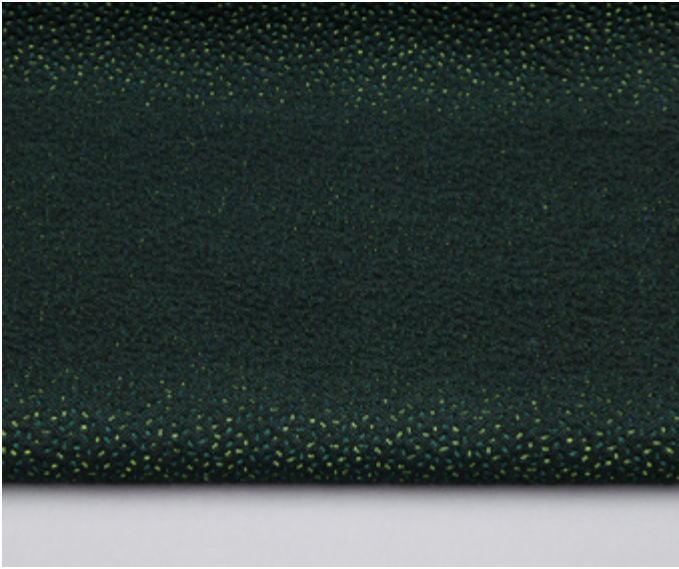
Mount in moist condition.

More info: Maintenance instruction–please see website

Foreign fibres may occur in light colours

Colour difference may occur





Sprinkles

Abrasion

Approximately 80.000 Martindale rubs, EN ISO 12947

Pilling

Note 4, EN ISO 12945

Lightfastness

Note 7, ISO 105-B02

Flame resistance

EN 1021-1/2

BS 5852 part 1

DIN 4102-B2

US Cal. Tech. Bull. 117

IMO FTP Code part 8

UNI 9175 Class 1.IM

No use of brominated flame retardants

Quality benefits

The knitted construction makes it particularly well suited as upholstery for furniture with organic shapes

Very good lightfastness

Flame retardant

Benefits of wool

Wool is a renewable resource

Wool is very comfortable, because of its ability to absorb/give off humidity

Wool is flame retardant

Wool is biodegradable

Wool is naturally soil resistant

Wool ages with grace

Environmental benefits

Follows the EU Eco Label dye restrictions including AZO dye and heavy metal restrictions

No content of formaldehyde

Not bleached

Biodegradable spinning oil

Complies with REACH regulation

For further information

kvadrat.dk

Sprinkles

Design: Bertjan Pot

Type: Upholstery

Composition: 40% polyester filling, 30% wool, 20% polyester, 10% polyamide

Yarn type: Worsted

Binding: Knit

Width: 160 cm

Weight: App. 1070 g/lin.m

Repeat: None

Cleaning: Vacuuming and dry cleaning

More info: Maintenance instruction—please see website



 5 year warranty

Specifications

Merit

466444

maharam

Application

Seating, Upholstered Walls

Characteristics

Content: 76% Post-Consumer Recycled Polyester, 24% Polyester

Finish: Stain Repellent

Backing: None

Width: 54" (137cm)

Bolt Size: 45 yards (41 m)

Weight: 17.1 oz/ly (530 gr/lm)

Country of Origin: USA

Maintenance

W/S-Clean with water-based cleanser or mild, water-free dry cleaning solvent.



Testing

Abrasion: ASTM D4157, 100,000 double rubs Wyzenbeek

Note: Abrasion test results exceeding ACT Performance Guidelines are not an indicator of product lifespan.

Multiple factors affect fabric durability and appearance retention.

Acoustics: ASTM C423, 0.80 NRC

Flammability: AS/NZS 1530.3

AS/NZS 3837 Unadhered

ASTM E 84 Unadhered

BS 476 Unadhered*

BS 5852 Crib 5*

CAL 117-2013

CAN ULC S102 Unadhered

EN 1021-1*

EN 1021-2*

EN 13501 Unadhered*

GB/T 17591*

ISO 5660 Unadhered

NFPA 260

SN 198 898*

*passes with additional treatment

Lightfastness: AATCC 16E, 40+ hours



Ritz/Ritz Trend

Ritz is a luxurious velvet for furniture, curtains and decoration. Colors with amazing depth and a soft texture that awakens the senses. Whether for living room, dining room or bedroom, whether for home or public setting, Ritz velvet is an exquisite choice. Ritz is produced with sustainable materials such as BCI cotton and recycled fibers.

Areas of use:

Covering decoration, Covering public environment, Curtain and drapery, Furniture cover

Bredd:	140 cm
Innehåll:	69% Cotton bci, 14% Recycled cotton, 9% Modal, 8% Recycled pet
Vikt (g/m ²):	460
Typ:	Styckfärgat
Öko-Tex certifikat:	2110225
Brandtest:	EN 1021 - 1
Martindale:	100000 (ISO 12947-2)
Färghärdighet mot gnidning - torr:	> 4 (ISO 105-X12)

Färghärdighet mot gnidning - våt:	> 3 (ISO 105-X12)
Ljusåktethet:	≥ 5 (ISO 105-B02)
Dragbrottsgräns Varp:	590 N (ISO 13934-1)
Dragbrottsgräns Väft:	410 N (ISO 13934-1)
Rivstyrka Varp:	27 N (ISO 13937-3)
Rivstyrka Väft:	28 N (ISO 13937-3)
Ljudabsorption:	Klass B, α _w 0,80 (ISO 354)
Dimensionsändring Varp:	<2,5 % (ISO 5077)
Dimensionsändring Väft:	<2,5 % (ISO 5077)

