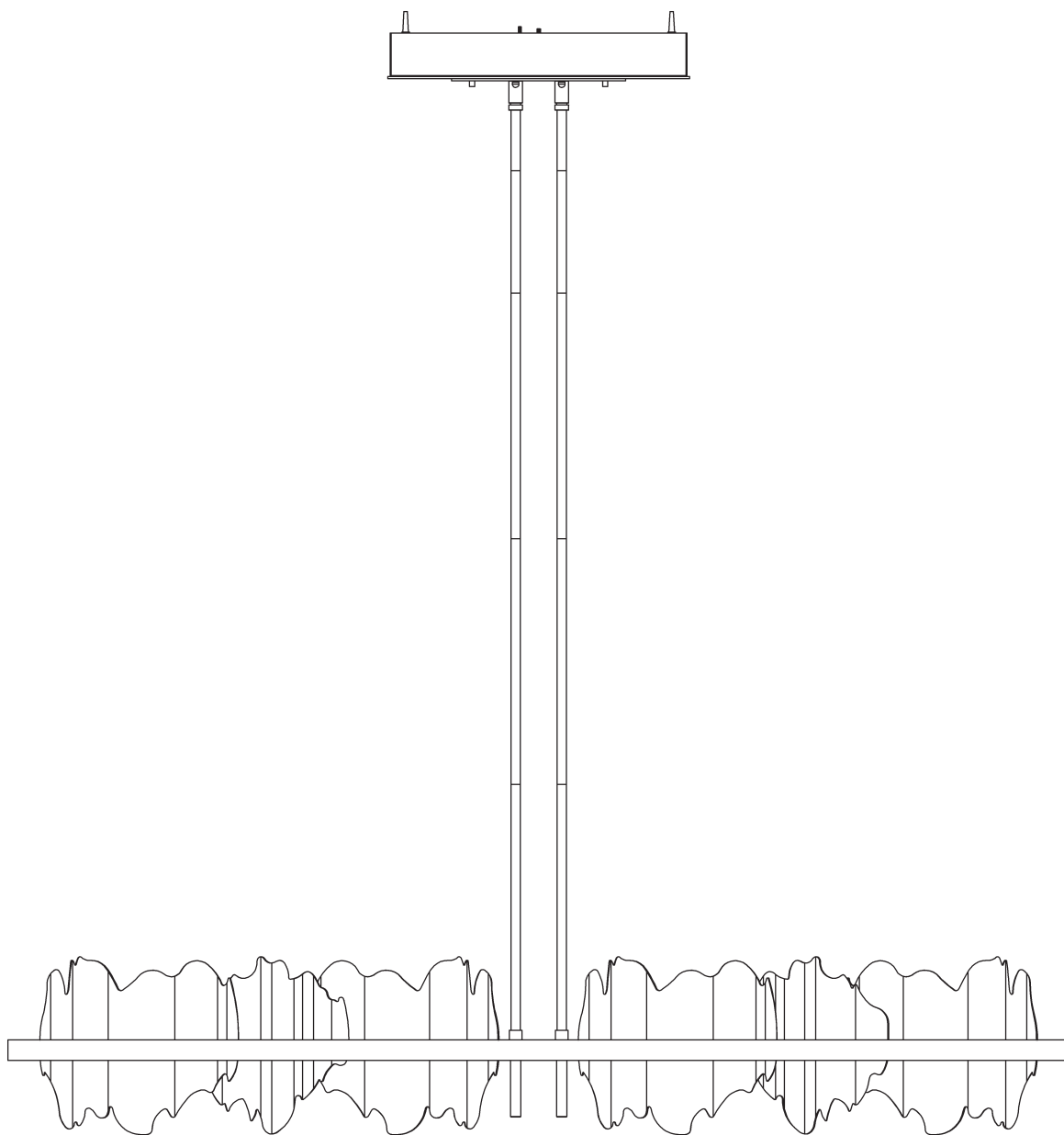


ASSEMBLY & INSTALLATION INSTRUCTIONS

A931

Hildene Pendant Large 139652



HUBBARDTON FORGE.

MODERN AMERICAN BLACKSMITHS | FINE, HAND CRAFTED LIGHTING
CASTLETON, VERMONT USA | HUBBARDTONFORGE.COM

52585

1 OF 8

Component Parts

- A Fixture**
- B Mounting Bracket**
- C #10 Screws (4)**
- D Anchors (4)**
- E 3" Fixture Pipe (2)**
- F 6" Fixture Pipe (2)**
- G 12" Fixture Pipe (6)**
- H Stem Nipples (12)**
- I Swivel Assembly (2)**
- J Canopy**
- K Nut (4)**
- L Safety Cable**
- M Ground Screw**
- N Cupped Washer**
- O Standoff (2)**
- P Stud (2)**
- Q Large Accent (4)**
- R Small Accent (2)**



ASSEMBLY & INSTALLATION INSTRUCTIONS

A931

Hildene Pendant Large 139652

CAUTION: FAILURE TO INSTALL THIS FIXTURE PROPERLY MAY RESULT IN SERIOUS PERSONAL INJURY OR DEATH AND PROPERTY DAMAGE. We recommend installation by a licensed electrician. This product must be installed in accordance with applicable installation code(s), by a person familiar with the construction and operation of the product and the hazards involved.*

Caution: Do not exceed maximum wattage noted on fixture. Use only recommended bulbs with fixture.

Please Note: After installation extra hardware and accessories are possible due to our kits are used on multiple products and options.

To Install Canopy (Figure 1) on following page

CAUTION: BE SURE POWER IS OFF AT THE MAIN BREAKER BOX PRIOR TO INSTALLATION.

1. Carefully unpack fixture (A) from the carton.
2. Locate mounting bracket (B). Bracket (B) will need to be secured to a structural member in the ceiling. For additional holes needing anchors, place mounting bracket (B) over the electrical box. Line up holes in bracket (B) with holes in electrical box. With a pencil, mark the location of mounting holes needing anchors in on ceiling. Set bracket (B) aside.
3. Drill 1/4" holes in the locations marked on the ceiling. Place the tapered end of the anchors (D) into the holes and gently tap them flush to the ceiling using a light weight hammer.
4. Thread the wires in the electrical box through the hole in mounting bracket (B) while moving bracket (B) into position. Using two machine screws (not provided) fasten bracket (B) to the electric box.

Note: A new electric box comes with screws. When replacing a fixture, retain the existing screws for use with the new fixture.

5. Using #10 screws (C), attach mounting bracket (B) to a structural member in the ceiling.

Note: Wood screws are supplied with your fixture; however, different materials and/or construction methods may require different fasteners. If in doubt, contact a qualified electrician.

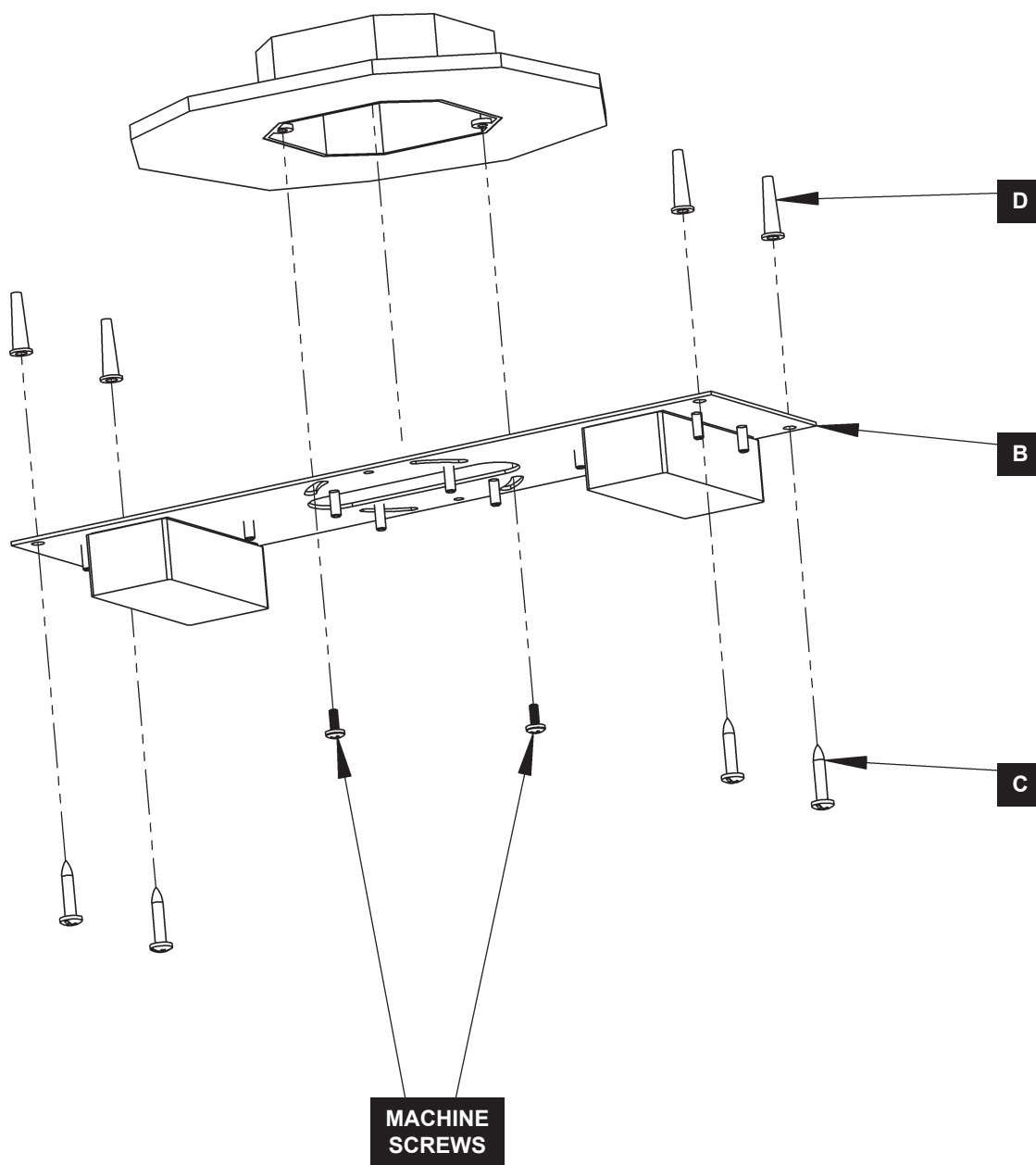
Caution: Do not rely on anchors alone to suspend fixture. Fixture must be attached to a structural member in the ceiling.

6. Install #10 screws (C) into remaining holes with anchors (D). Be sure not to overtighten and strip anchors (D).
7. Follow instructions on page 5 to install fixture.

ASSEMBLY & INSTALLATION INSTRUCTIONS

A931

Hildene Pendant Large 139652



(Figure 1)



HUBBARDTON FORGE.

MODERN AMERICAN BLACKSMITHS | FINE, HAND CRAFTED LIGHTING
CASTLETON, VERMONT USA | HUBBARDTONFORGE.COM

52585

4 OF 8

ASSEMBLY & INSTALLATION INSTRUCTIONS

A931

Hildene Pendant Large 139652

To Install Fixture (Figures 2 & 3) on following pages

1. Locate fixture pipes (E, F, G), stem nipples (H), and fixture (A).
2. Provided are multiple fixture pipes in three different lengths. Choose the combination that will achieve the overall height desired. Refer to the table below to determine the pipes required to reach the desired overall height. Once you have determined the components necessary, feed the wires that exit fixture (A) through the individual components and thread pipes and couplings together. Wires will slip easier through loose components than through pipes and couplings that are pre-assembled. Once wires are run, apply thread locking compound to all the connection points and assemble the pipes and nipples.

| | | Overall Height of Fixture | | | | | | | | | | | | |
|---------------------|--------------|---------------------------|------|------|------|------|------|------|------|------|------|------|------|------|
| | | 17.8 | 20.8 | 23.8 | 26.8 | 29.8 | 32.8 | 35.8 | 38.8 | 41.8 | 44.8 | 47.8 | 50.8 | 53.8 |
| # of Pipes Required | 3" Pipe (E) | 1 | | 1 | | 1 | | 1 | | 1 | | 1 | | 1 |
| | 6" Pipe (F) | 1 | | | 1 | 1 | | | 1 | 1 | | | 1 | 1 |
| | 12" Pipe (G) | | 1 | 1 | 1 | 1 | 2 | 2 | 2 | 2 | 3 | 3 | 3 | 3 |

NOTE: APPLICATION OF THE THREAD LOCKING COMPOUND IS NECESSARY TO PREVENT THE PIPE FROM LOOSENING DURING REGULAR MAINTENANCE AND CLEANING OF THE FIXTURE. BE CERTAIN TO APPLY THE COMPOUND.

3. Slip wires from the fixture (A) through swivel assembly (I) and thread swivel into fixture pipe.
4. Repeat steps 2 & 3 for second set of pipes.
5. Carefully slide canopy (J) over wire and pipes until it gently rests upon fixture (A).
6. Ensure that slots on swivel assemblies (I) are aligned as shown in Figure 3.
7. Remove nuts (K) from canopy studs. Raise fixture (A), align holes in pipe brackets with canopy studs. Secure with nuts (K).
8. If fixture (A) requires leveling, adjust hex nuts (K) holding swivel assemblies (I) to mounting bracket (B). See Figure 3.
9. Raise canopy (J). Connect safety cable (L) from canopy (J) to mounting bracket (B) using a #8 screw that ships in the mounting kit bag.

Note: Safety cable (L) is used to temporarily suspend canopy while wiring connections are made.

10. The LED Driver OUTPUT wires are red and blue (or black) and are shipped with connectors attached. Connect the red wires from the fixture to the red wires from the driver using this connector. Repeat the same for the blue wires. Blue to blue or blue to black.

CAUTION: DO NOT CONNECT RED AND BLUE FIXTURE WIRES TO MAIN VOLTAGE, AS THIS CAN DAMAGE LEDS AND VOID WARRANTY COVERAGE.

11. Using ground screw (M) and cupped washer (N) that ship in kit bag, run a pigtail lead from bracket (B) to the junction box. Connect all ground wires (bare copper or green to bare copper or green). Push wires back into outlet junction box.
12. Using suitable wire connectors (not provided) connect LED Driver INPUT wires to supply wires (white to white and black to black).

CAUTION: MAKE SURE WIRE CONNECTORS ARE TWISTED ON SECURELY, AND NO BARE WIRE IS EXPOSED.

13. Align the holes in canopy (J) with standoffs (O) and secure with studs (P).

CAUTION: BE SURE NO WIRES ARE PINCHED BETWEEN CANOPY (J) AND THE CEILING.

14. Refer to instructions on final page to complete installation.

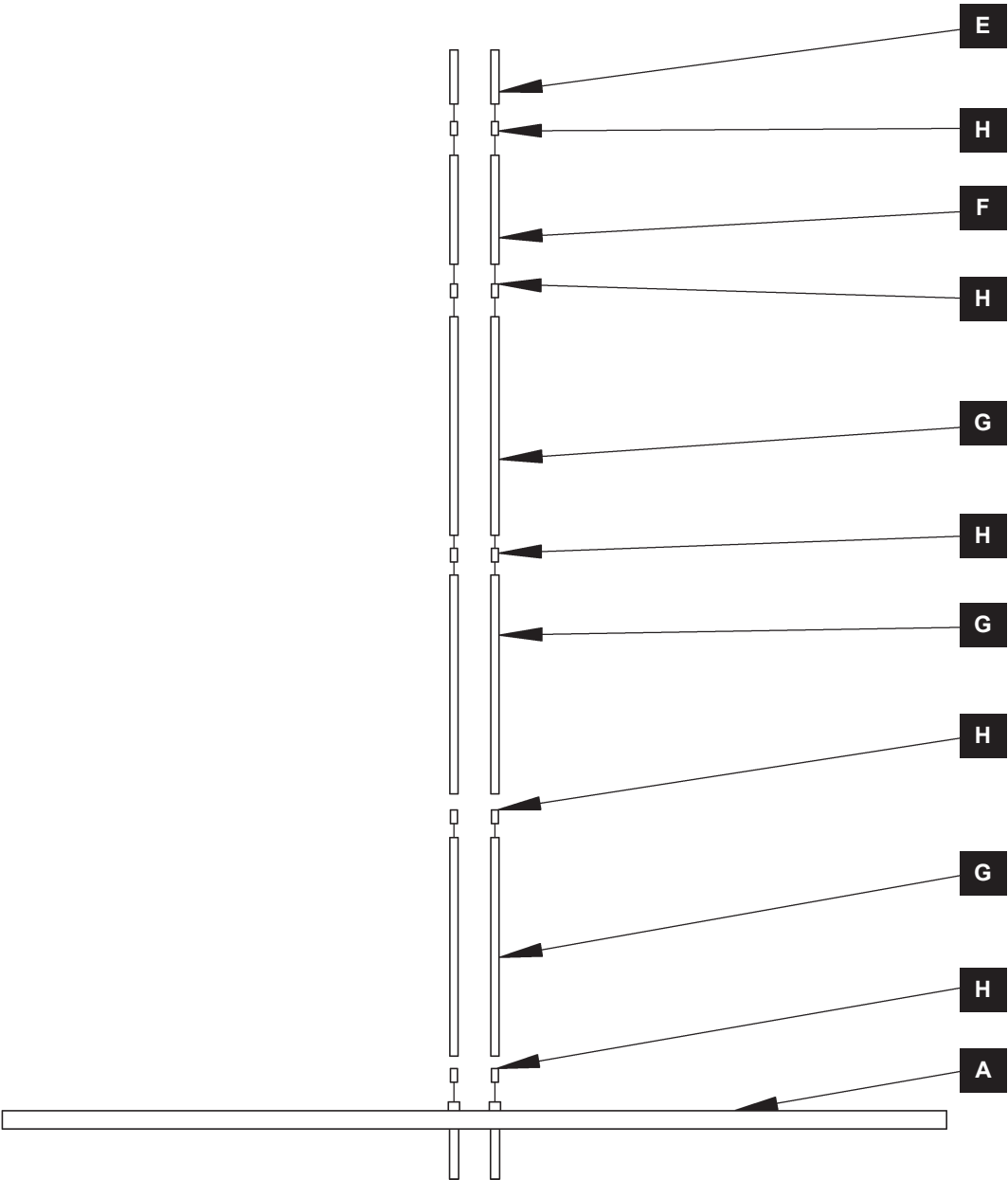


HUBBARDTON FORGE.

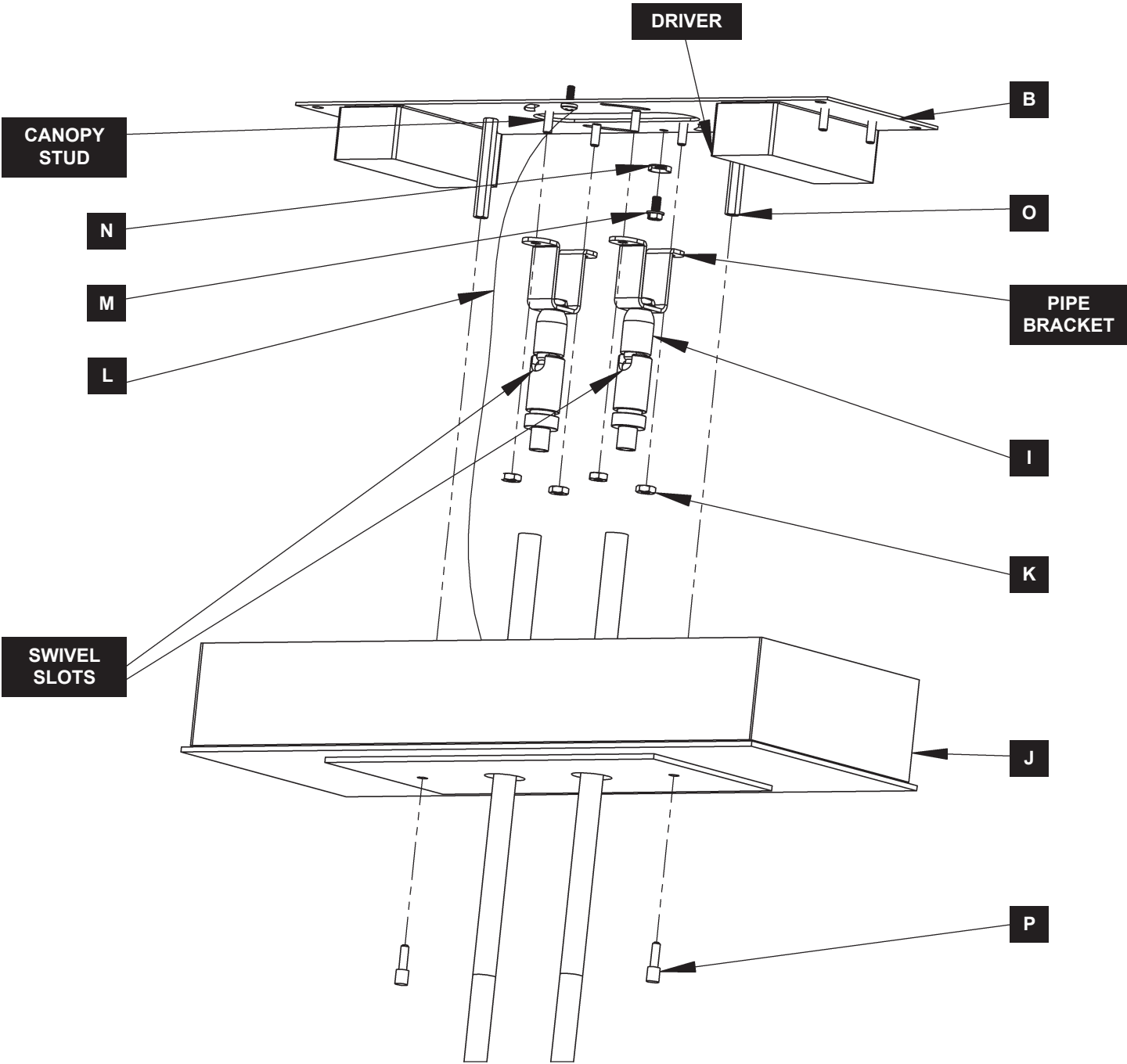
MODERN AMERICAN BLACKSMITHS | FINE, HAND CRAFTED LIGHTING
CASTLETON, VERMONT USA | HUBBARDTONFORGE.COM

52585

5 OF 8



(Figure 2)

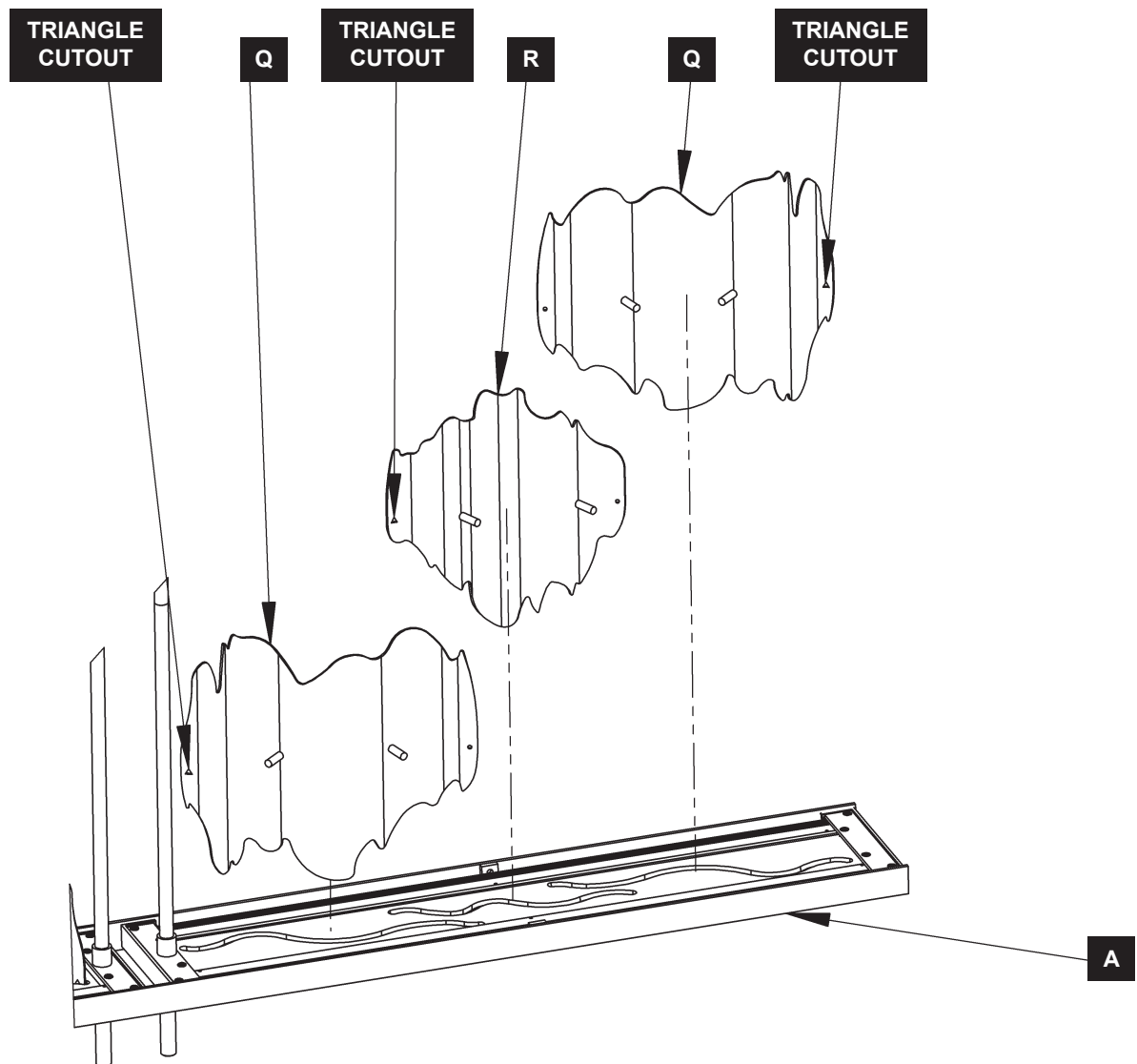


(Figure 3)

Hildene Pendant Large 139652

To Install Accents (Figure 4)

1. Locate large accents (Q) and small accents (R).
2. Install accents into fixture (A). To help with orientation, the tip of the triangle cutouts should point upwards.
3. Repeat for other side of fixture (A).
4. Restore electricity at main breaker.



(Figure 4)

If you need further assistance, or find that you are missing any parts, please contact the dealer from which you purchased this product. We hope you enjoy your fixture!

** Hubbardton Forge will not be liable for injury or damage caused by improper installation, lamping or use of this fixture.*



HUBBARDTON FORGE.

MODERN AMERICAN BLACKSMITHS | FINE, HAND CRAFTED LIGHTING
CASTLETON, VERMONT USA | HUBBARDTONFORGE.COM