

Adjust under-mounted drawer slides



Tools required

None

How to release the drawer slides

To remove drawers from the slides, press both handles on the front slide clips on the drawer bottom and firmly pull drawer forward (Figure 1).

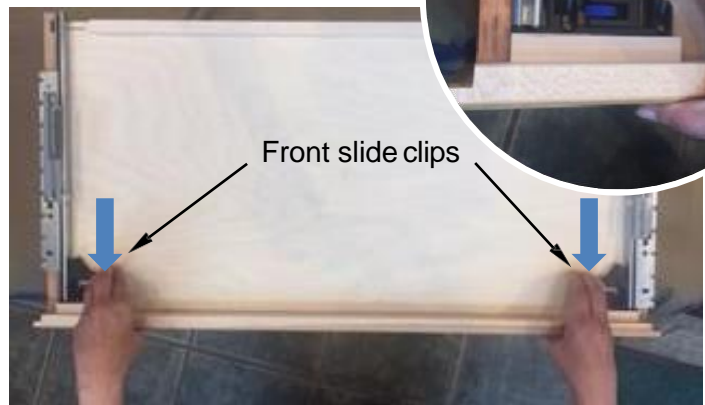


Figure 1. Release the slides

How to attach the drawer slides

To attach metal slide, pull each slide end into the plastic locking system until you hear a locking sound. Make sure the drawer is level when you do this operation (Figure 2).

When replacing, assure that drawers are inserted into their original position.



Figure 2. Attach the drawer slides

How to level the drawer slides

The drawer can be leveled by sliding the blue wheel back and forth on each locking system (Figure 3).



Figure 3. Level the drawer slides

Tools required

None

Drawer Interlock System

Most cases with more than two drawers come fitted with a safety feature that prevents more than one drawer per vertical column of drawers to be open at a time. This system consists of a rod mounted to the interior case side with a series of black *actuators* that interact with an *activator pin* attached to each drawer side. Only one actuator per column may be in its *open position* at a time. When removing multiple drawers, follow the steps on the previous page to remove the first drawer, then flip its respective actuator to the *closed position* before moving on to the next drawer. Reverse this process to replace drawers, flipping each actuator to its *open position* before attempting to insert the respective drawer. *Be sure to insert drawers in their original position.*

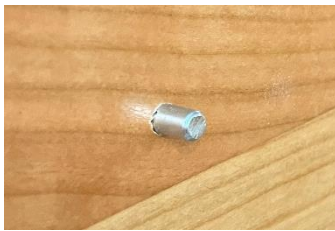


Figure 6. Activation pin on drawer side



Figure 4. Actuator in the open position



Figure 5. Actuator in the closed position

Tools required

None

How to level doors (for cases with doors)

If your case has a door, it can be leveled by adjusting two hinges. There are three screws on each hinge and each can be adjusted independently (Figure 4). The first screw can adjust the door in the left and right direction. The second screw can adjust the door up and down. The third screw can move the door in and out. Please adjust your door accordingly.

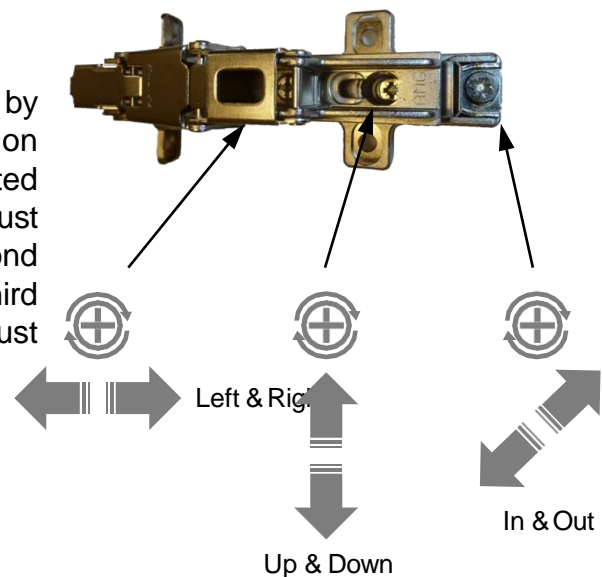


Figure 7. Adjust the door(s) by turning the screws on the hinge.

Interlock / Drawer Troubleshooting

A Single Drawer Is Not Closing Properly

- Disengage the drawer from the undermount clips and remove the drawer from the slides.
- Rotate the black actuator on the right side to verify that it moves freely (without much effort or restriction). With the drawer removed, the actuator's slot should be rotated toward you. Push the actuator lightly so that the slot is pointed down. This is the "drawer closed" position. Pull the actuator back up so that the slot is pointed again toward you. This is the "drawer open" position. NOTE: TO REINSTALL A DRAWER, THE ACTUATOR MUST BE POINTED TO YOU IN THE OPEN POSITION. THIS ALLOWS THE ACTUATOR TO RECEIVE THE PIN.
- Reinstall the drawer on the undermount slides. Verify that the pin on the right drawer side is in place and fully inserted into the hole. It is important that the drawer is seated correctly onto the undermount slide. Pull out each slide and place the drawer on them. Note that each slide rail has a small / bent metal tab at the back. This tab must be inserted into the small hole located on both the right and left sides of the drawer back. A good indication that the slide is fully seated is you will hear a "click" as the slide is pulled forward into the undermount clip.
- The drawer should now close properly. If you find that the actuator does not rotate easily, go to the next section.

Multiple Drawers On The Same Side Are Not Operating Properly

- Remove each drawer, one at a time, following Steps #1 and #2 above.
- With all drawers removed, again verify that each black actuator rotates freely and that the interlock rail moves up and down in the slot.
- Reinstall all the drawers, one at a time, starting with the bottom drawer. Follow Step #3 above when reinstalling the drawers. Verify that each drawer closes properly.
- After reinstalling each drawer, verify all black actuator above the installed drawer still rotate freely.
- If at any time an actuator stops rotating freely after installation of the drawer below, remove and reinstall the drawer. If that does not resolve the issue, remove the clear bumpers located on each corner of the drawer front's back. If the issue remains, note the drawer installed that appears to be causing the issue and call the Factory for further guidance.

Safety Notification

It is strongly recommended that you install the anti-tip stop included with your furniture to help prevent a potential top-over of the furniture onto a small child.

Care Instructions

To care for and preserve the finish on your new Copeland Furniture piece, please keep the following recommendations in mind.

- While our furniture has been finished with a durable top coat, the surface may be sensitive to dents and abrasions during the first 30 days in your home.
- Treat the surface finish gently so it does not dent or chip. Tape or stickers should not be put on the finish.
- For general care use a soft cloth to dust the furniture.
- Use damp cloth with a mild soap to clean-up spills or dirt. Dry the surface thoroughly.
- Please do not use any polishes, waxes or solvents to clean the surface of the furniture. This holds true for new Copeland Furniture pieces as well as items you may already have in your home.
- Please do not place any candles directly on the surface of your furniture. The perfumes and dyes in the candles may penetrate the finish.
- Beds must be disassembled before moving to avoid damage. Never attempt to move the bed while it is assembled.

Special Care Instructions for Cherry Furniture

Furniture crafted from cherry wood darkens with age. This change in color, from a reddish tan to a reddish brown, results from the natural oxidation of the wood when it is exposed to light. Objects left on a piece of cherry furniture for an extended period will retard this oxidation process and when removed, may leave a lighter colored outline of the object on the surface. With continued exposure to light, this color difference will eventually disappear and the wood will reach a mature even tone.

