



Comfort Recliner Disassembly Instructions

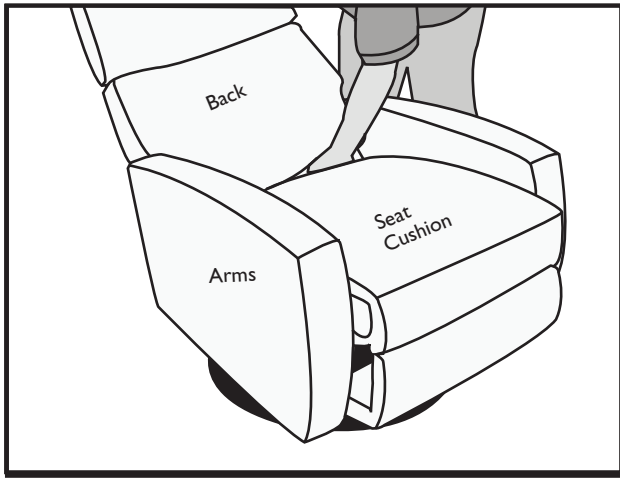


Fig.1 To disassemble the Back of the recliner from mechanism, start by tilting the back of the recliner to allow access to the inside arm . Relieve the tension on the clip that is anchoring the back to the mechanism. There are two clips in total.

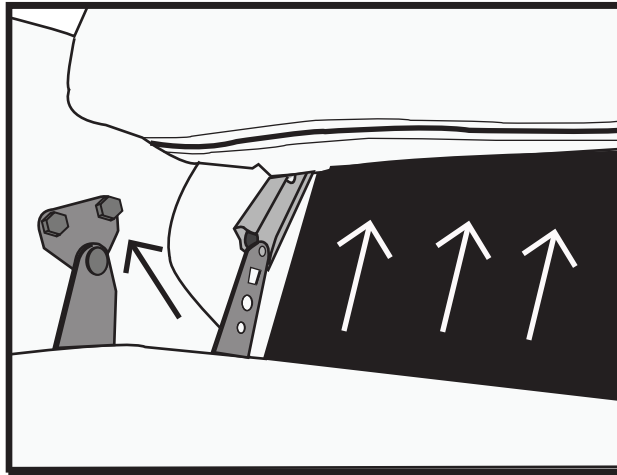


Fig.2 Now pull the Back until the metal cap has successfully been removed from the mechanism. Now two bolts on each arm from the mechanism are accessible. These will need to be removed.

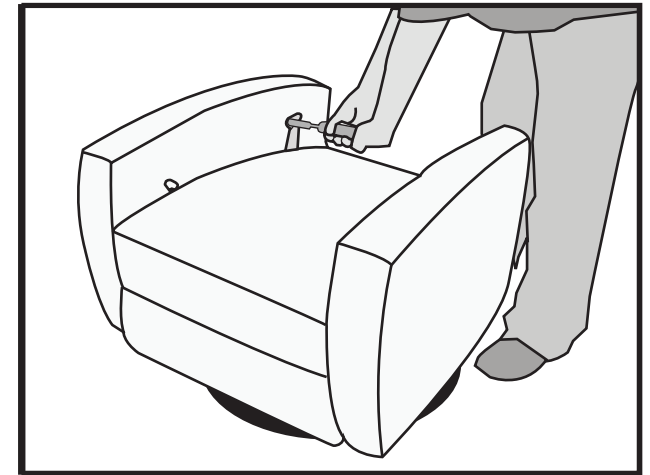


Fig.3 Remove the bolts with a 7/16" socket and ratchet. There are two bolts on each arm mounting the mechanism to the inside arms.

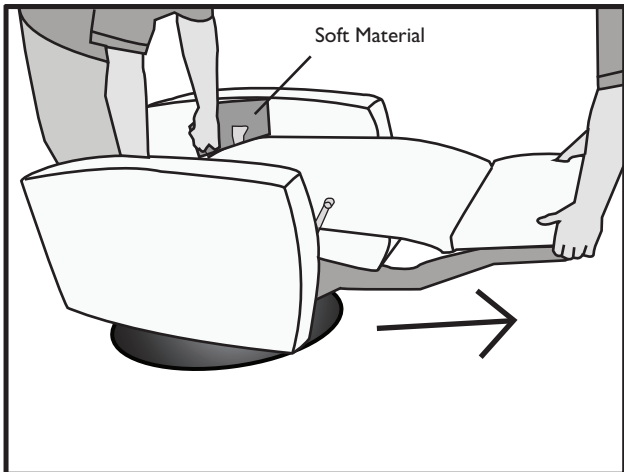


Fig.4 Once you have removed all four bolts, apply a small piece of soft material in between the mechanism and inside arm to prevent damage to the cover .With the help of someone, fully extend the seat and pull out the seat cushion horizontally until the seat cushion slides of mechanism. Do not lift the seat cushion.

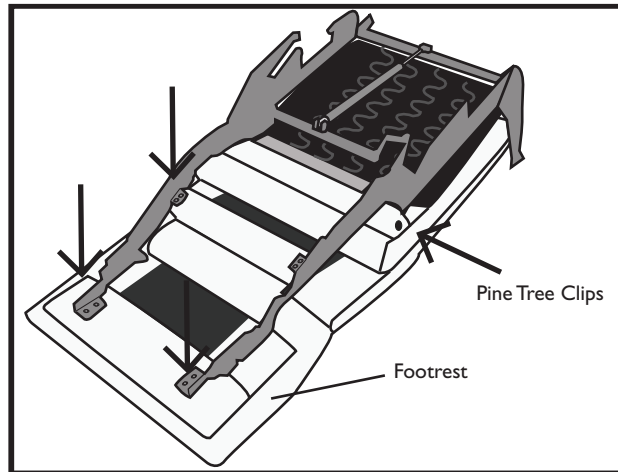


Fig.5 To remove the seat cushion from the mechanism, remove the bolts that are attached to the footrest and seat with a 1/4" socket and ratchet. There are two pine tree clips attaching a velcro flap to the mechanism. Pull out the two pine tree clips to detach the velcro flap.

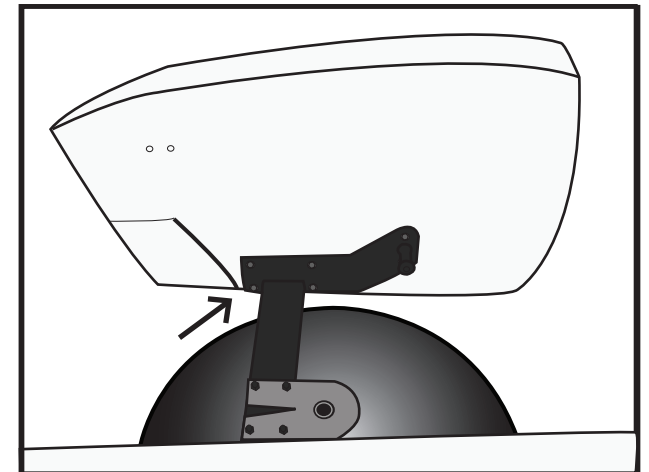
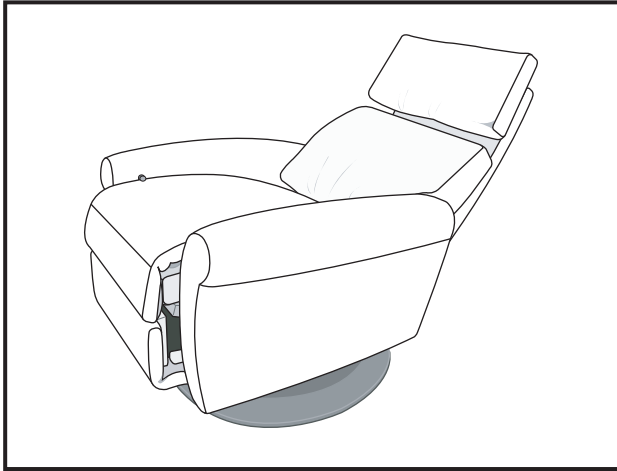


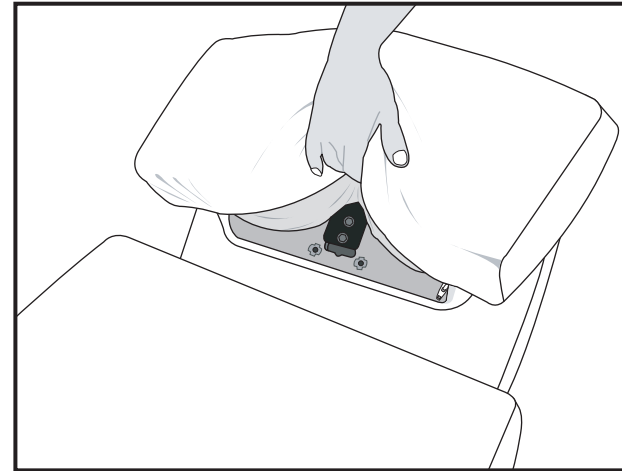
Fig.6 Each arm is attached to the chassis by 6 bolts that require a 7/16" socket and ratchet. Remove these bolt to detach the arm from the chassis.



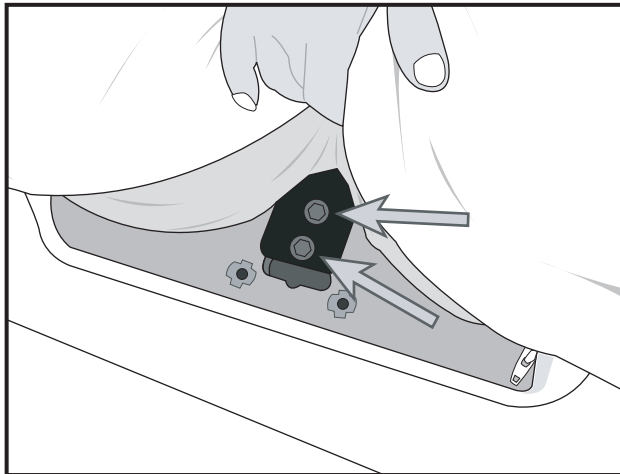
Comfort Recliner Headrest Removal Instructions



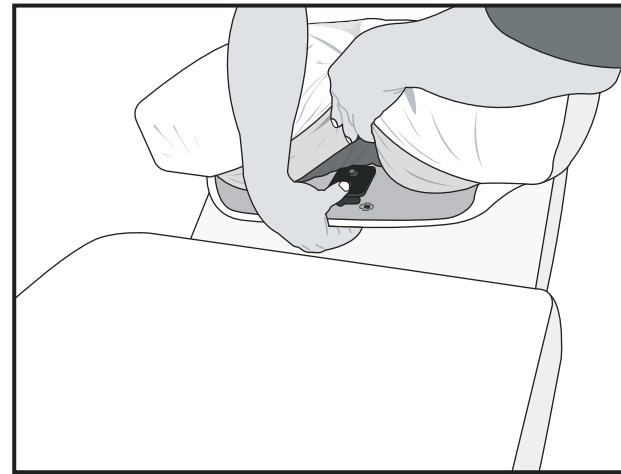
1. Open recliner to the position shown.



2. Raise headrest to it's highest point. Open zipper on the bottom side of the headrest to expose two black mounting bolts.



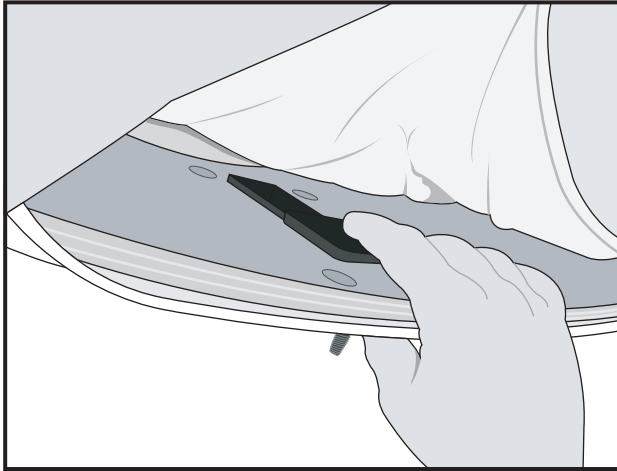
3. Loosen the two bolts (refer to arrows) with a 7/16" socket, but do not remove them from the headrest assembly.



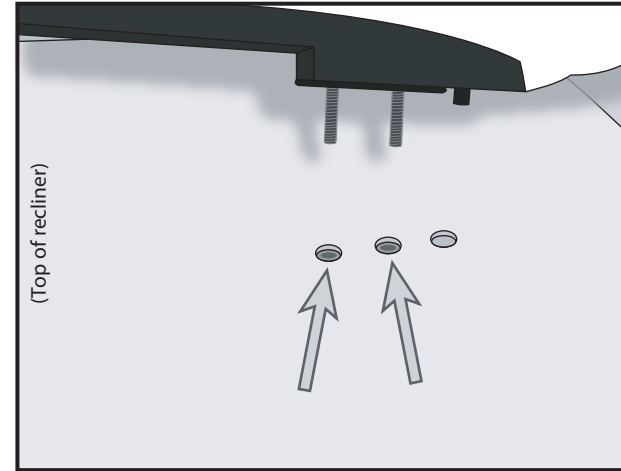
4. Place your thumb over the two bolt heads and grasp the bottom of the headrest assembly with your fingers, and lift the headrest assembly off of the back.



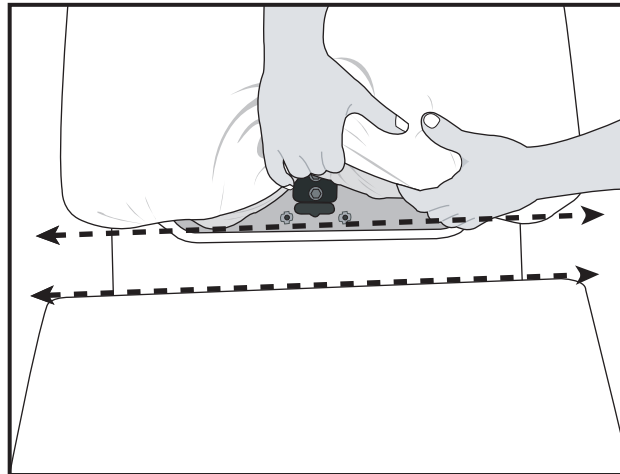
Comfort Recliner Headrest Reinstallation Instructions



1. To reinstall headrest assembly: Grasp the parts as shown, with fingers on top of the two bolts and your thumb holding the square metal plate and bottom plastic piece.



2. Line up the two bolts with the top two holes in the recliner back (refer to arrows). Place bolts into the holes.



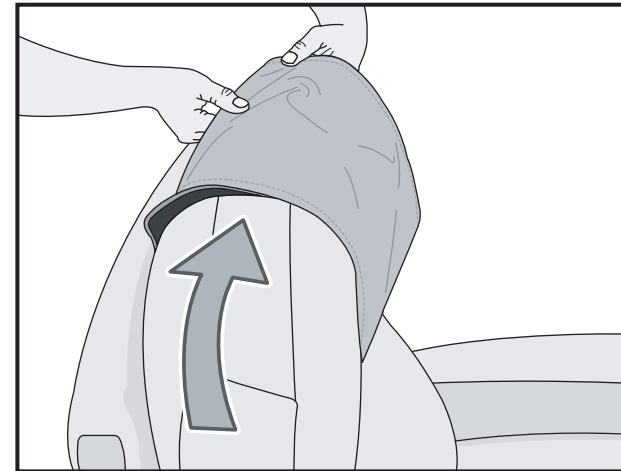
3. Partially tighten the bolts, and check that headrest assembly is parallel the top of the back cushion. Once the headrest assembly is parallel with the top of the back cushion, finish tightening the bolts.



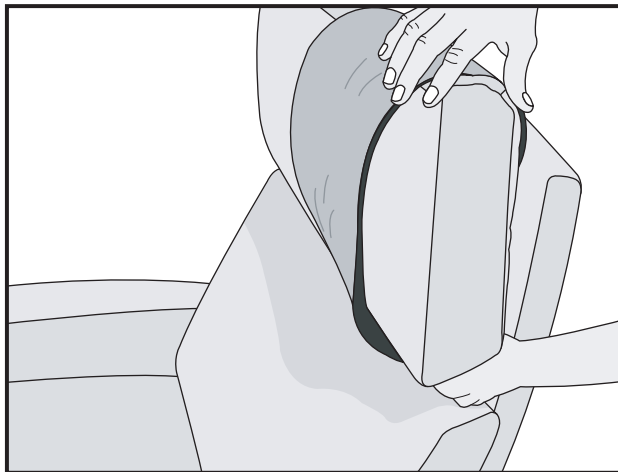
Comfort Recliner Headrest Cover Installation



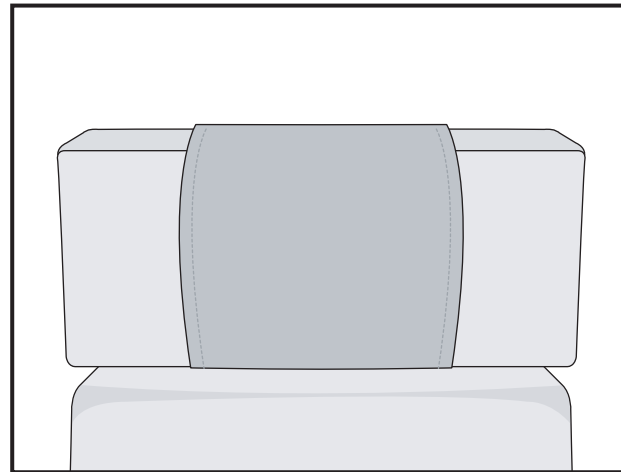
1. Begin by folding the headrest cover as shown in the picture above. Attach the clips together as shown.



2. Standing behind the recliner, slide one side of the headrest cover onto the headrest. Make sure the strap of the headrest cover goes behind the headrest. Using both hands, slide the headrest cover all of the way to the end of the headrest.



3. With the headrest cover all of the way at the opposite end of the headrest, put the other end of the headrest cover over the headrest. Make sure the headrest cover strap goes behind the headrest.



4. Adjust the headrest cover as necessary so that it sits in the center of the headrest.



COMFORT
RECLINER
BY AMERICAN LEATHER

**YOUR GUIDE TO OPERATING THE
ULTIMATE POWER RECLINER**

AMERICANLEATHER.COM

Congratulations on your purchase of the power Comfort Recliner™ by American Leather®.

Following are helpful hints and important safety information regarding the use and care of your Comfort Recliner™.

Please review this instruction manual thoroughly before using your power Comfort Recliner™.

This product is intended for household / residential use only.

IMPORTANT SAFETY INSTRUCTIONS

Read all instructions before using the power Comfort Recliner™.

When using an electrical appliance, basic precautions should always be followed, including the following:

DANGER! To Reduce the Risk of Electric Shock:

Always unplug the power Comfort Recliner™ from the electrical outlet before cleaning.

WARNING! Risk of Injury:

Keep children away from the extended foot support and any moving parts.

CAUTION! Do not allow children to play on this power Comfort Recliner™ or operate the power Comfort Recliner™ mechanism. The leg rest folds down when closing and could possibly cause injury to a child. Always leave the power Comfort Recliner™ in an upright and closed position when not in use. Keep hands and feet clear of mechanism. Only the occupant should operate it.

Safety or Recall Notices:

Register your Comfort Recliner™ warranty at americanleather.com. This will ensure that American Leather® can contact you in the event of a safety notice or product recall. Please contact your American Leather® retailer if you did not receive warranty registration information with your power Comfort Recliner™.

POWER CORD SAFETY

WARNING!

UNPLUG AND REMOVE POWER CORD FROM THE WALL AND THE POWER SOCKET AT THE REAR OF THE POWER COMFORT RECLINER™ WHEN NOT IN USE AND STORE THE CORD OUT OF REACH OF CHILDREN.

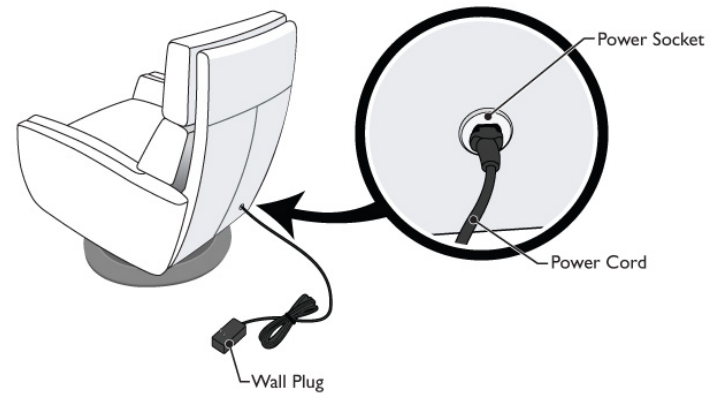


Figure 1

Take care when moving the power Comfort Recliner™ that the power cord is not under the base or legs of the Comfort Recliner™, or it may get damaged. **Never operate the power Comfort Recliner™ if it has a damaged cord or plug.**

IMPORTANT SAFETY INSTRUCTIONS

Footrest Entrapment:

The power Comfort Recliner™ has a spring-loaded footrest to prevent entrapment when the power Comfort Recliner™ is being closed. In the event that something obstructs the footrest, it will stay partially open via springs located on both sides of the power Comfort Recliner™, even if the motor continues to the fully closed position.

In the Event of an Obstruction:

- Immediately stop the power Comfort Recliner™.
- Carefully open the power Comfort Recliner™ and free the obstruction. If necessary, manually pull outward on the spring-loaded footrest and then free the obstruction.

WARNING!

To reduce the risk of burns, fire, electric shock, or injury to persons:

- Use the power Comfort Recliner™ only for its intended use as described in this manual.
- Only operate the power Comfort Recliner™ when seated.
- Never press or activate the control switch if you are not actually sitting in the power Comfort Recliner™.
- Only the occupant should activate the switch.
- Operation is designed for one person only.
- Never operate the power Comfort Recliner™ with more than one person sitting on an individual seat.
- Never sit or stand on the footrest.

- Each power Comfort Recliner™ seat can accommodate an occupant of up to 300 pounds maximum.
- Do not race, play with, or abuse the power Comfort Recliner™ mechanism.
- Never operate the power Comfort Recliner™ if it has a damaged cord or plug, if it is not working properly, if it has been dropped or damaged, or dropped into water.
- Contact your local retailer for examination and repair.
- To unplug the power, return the power Comfort Recliner™ to the upright and closed position and then remove plug from the wall outlet or power socket from the rear of the power Comfort Recliner™.
- Unplug from outlet before putting on or taking off parts.
- Close supervision is necessary when the power Comfort Recliner™ is used by or near children or disabled persons.
- Keep cord away from heated surfaces.
- Never drop or insert any object into any opening.
- Do not use outdoors.
- Do not operate where aerosol (spray) products are being used or where oxygen is being administered.
- Never operate the power Comfort Recliner™ with their openings blocked. Keep the air openings free of lint, hair, and the like.

IMPORTANT SAFETY INSTRUCTIONS

POWER SUPPLY

Voltage in: 100-120V – 50/60 Hz Lin: 1.2A
Voltage out: 29 Vdc Lout: 1.8A
Duty Cycle 2 min ON/20 min OFF
Class 2 Power Supply

Servicing of Double-Insulated Products:

The power Comfort Recliner™ is a double-insulated product. In a double-insulated product, two systems of insulation are provided instead of grounding. No grounding means is provided on a double-insulated product, nor is a means for grounding to be added to the product. Servicing a double-insulated product requires extreme care and knowledge of the system, and is to be done only by qualified service personnel. Replacement parts for a double-insulated product must be identical to the parts they replace. A double-insulated product is marked with the words “DOUBLE INSULATION” or “DOUBLE INSULATED.” The symbol (Square within a square □) is also able to be marked on the product.

BATTERY SAFETY (OPTIONAL):

If battery operation was purchased as an optional accessory to your power Comfort Recliner™ there are additional safety instructions to be followed.

DANGER! Risk of physical injury:

The power Comfort Recliner™ has a control that is located remotely from the battery that must be secured before servicing. (See Figure 2)

WARNING!

Unplug and remove the power cord from the wall and FROM the power socket at the rear of the power COMFORT RECLINER™ when not in use and store out of reach of children. also, unplug the master power cord from the control box to prevent use when a battery is mounted in the COMFORT RECLINER™ power system. (See Figure 2)

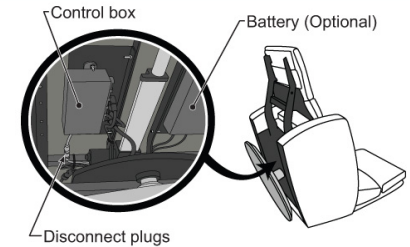
WARNING!

Only use an identical replacement battery supplied by your local American Leather® retailer. The battery is matched to the charging system in the power Comfort Recliner™. Use of a non-identical battery could cause risk of burns, fire, electric shock, or injury to persons.

Replacement batteries can be ordered from your local American Leather® retailer.

- **Do not** use a non-rechargeable battery
- **Do not** mix old and new batteries
- **Do not** mix non-rechargeable and rechargeable batteries
- Use only one battery – **Do not** chain batteries together

Figure 2



USER MAINTENANCE INSTRUCTIONS

Unplug the outlet cord before cleaning the power Comfort Recliner™.

If the power Comfort Recliner™ is equipped with an optional battery, also unplug the master power cord from the control box before cleaning or performing maintenance. (See *Figure 2*)

Do not use any liquids or spray cleaners on any electrical components.

Follow the cleaning code located on the swatch label under the footrest or in your warranty booklet to clean the upholstery cover.

It is not necessary to lubricate any components of the power Comfort Recliner™.

None of the electrical components are user-serviceable. Any other servicing should be performed by an authorized service representative.

If the power cable or transformer are ever damaged, they can be ordered from your American Leather® retailer.

OVERLOAD PROTECTION

The power Comfort Recliner™ has both electronic and thermal overload protection. If the weight limit of the power Comfort Recliner™ is substantially exceeded or an obstruction keeps the power Comfort Recliner™ from being able to open or close, an electronic overload sensor will prevent the motor from operating. In addition, the transformer is equipped with a thermal fuse. If the motor or transformer is overworked, this thermal fuse is tripped, which shuts off the motor and transformer. The thermal fuse will automatically reset in 10-15 minutes after the transformer has cooled down. The power Comfort Recliner™ may then be used normally.

STORAGE

If the power Comfort Recliner™ will not be used for an extended period of time, remove the cord from the power socket and wall outlet and store the cord out of reach of children. If the power Comfort Recliner™ is equipped with an optional battery, also unplug the master power cord from the control box.

- ***Store the power Comfort Recliner™ in a dry interior location.***

SAVE THESE INSTRUCTIONS

Comfort Recliner™

by American Leather®

YOUR GUIDE TO OPERATING THE ULTIMATE POWER RECLINER

CONTROL PANEL ATTACHED TO SEATING UNIT

OPERATING CONTROL PANEL:

The control buttons are backlit with **LED** lights that turn on automatically when a button is touched, and will turn off automatically about 5 to 6 seconds later. (See *Figure 3*)

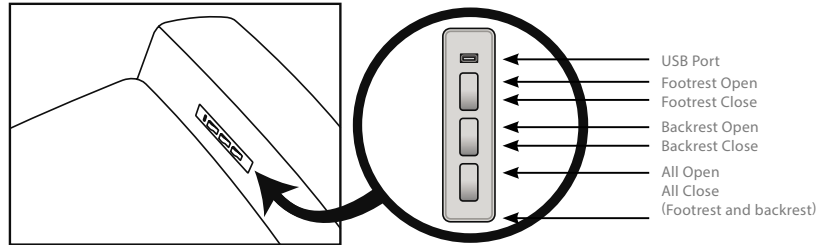


Figure 3

FOOTREST & BACK RECLINE

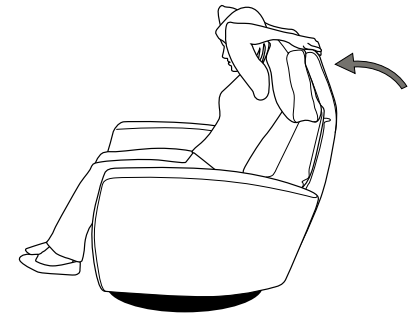
The footrest has infinite stopping positions, independent from the power Comfort Recliner™ back recline. To raise the footrest, press the raised area of the front toggle switch located next to the USB port. If you are sitting in the power Comfort Recliner™, this is the farthest button from the backrest. Simply release the button to stop the footrest in any position. To close, press the rear area of the same toggle switch. (See *Figure 3*)

The back recline also has infinite stopping positions, independent from the footrest. To recline the backrest, press the raised area of the middle toggle switch. When you have reached your desired position, simply release the button to stop the backrest in any position. To close, press the rear area of the same toggle switch.

To open both the footrest and the backrest at the same time, press the raised area of the third toggle switch. To close both footrest and backrest at the same time, press the rear area of the third button closest to the backrest. This button will close the footrest and return the backrest to the full upright position.

ADJUSTING HEADREST

The Comfort Recliner™ headrest adjusts to provide back and neck support. The headrest articulates forward to create the perfect angle for watching television or reading a book. When standing behind the power Comfort Recliner™, you can change the angle by pressing forward on the outside of the headrest. However, if you are already sitting and want to adjust the angle, place both hands on the back of the headrest and pull forward to your desired position. To return the articulating headrest to its normal position, simply push back with your hands.



OPTIONAL BATTERY POWER

The purchase of the optional battery for use in the power Comfort Recliner™ allows the power Comfort Recliner™ to be operated either with the cord plugged into the wall, or with battery power only. This allows you to float the power Comfort Recliner™ in the room without cords attached.

Battery Life:

The optional battery is a 1.8 Amp hour Lithium Ion (1.8 A/h Li-ion) battery in a fully enclosed case. The minimum life expectancy of the battery is 500 complete charge/discharge cycles.

A fully charged battery will provide about 100 complete open/close cycles before it needs to be recharged.

When the battery needs charging the power Comfort Recliner™ will begin to operate more slowly, indicating the battery is running out. If the battery gets to about 10% of capacity, a beeping tone will sound when any of the control buttons are pressed, indicating that the power Comfort Recliner™ needs to be recharged immediately.

Please note that for optimal battery life, the battery should not be used to its capacity, or used until the power Comfort Recliner™ stops working. It is recommended that the battery be charged once per month if it is not going to be used for an extended period of time.

Battery Recharging:

To recharge the battery in the power Comfort Recliner™, plug the cord from the power supply into the power socket at the rear of the power Comfort Recliner™ and then plug the power supply into an electrical outlet as shown in (Figure 4).

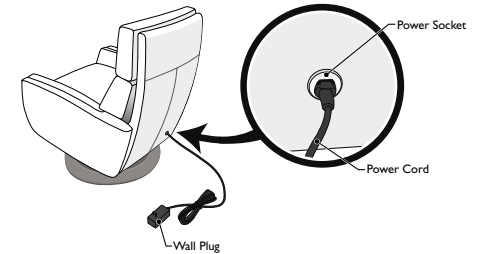


Figure 4

The power system has an automatic power selector system that chooses battery power or power from the wall outlet, depending on whether the power Comfort Recliner™ is plugged in or not.

If the power Comfort Recliner™ is plugged in for recharging, the automatic power selector system will provide power to charge the battery and operate the power Comfort Recliner™ at the same time.

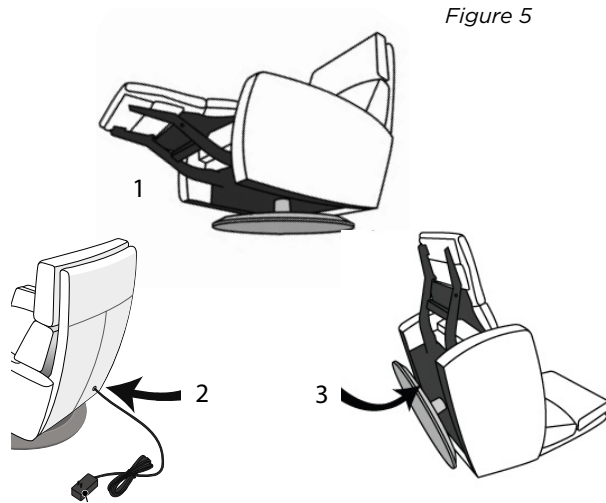
If the cord is plugged into the power Comfort Recliner™ continuously, the system will not overcharge the battery.

The charging time for the battery is about eight hours.

To determine if the battery is done charging, open the footrest and look under the power Comfort Recliner™ footrest at the battery. The **LED** light on the battery will be a solid **GREEN** if it is fully charged and flashing **AMBER** if it is still charging.

Battery Replacement Instructions (OPTIONAL)

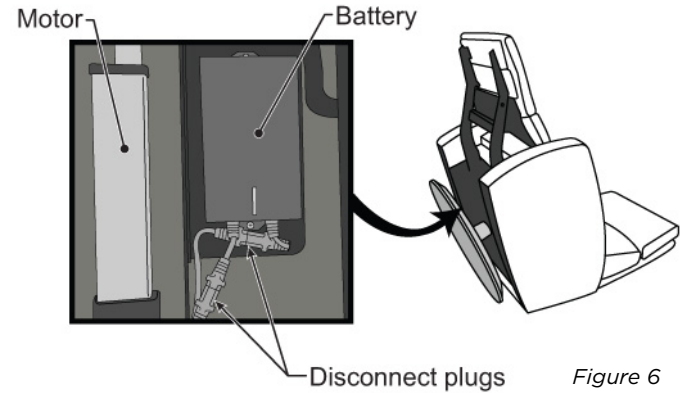
Your power Comfort Recliner™ may be equipped with optional battery power. Follow the instructions below for the power Comfort Recliner™ that are equipped with this feature.



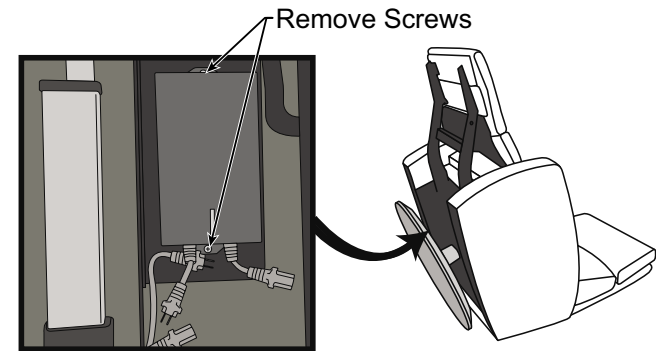
In the event that the battery needs to be replaced: (See *Figure 5*)

1. Fully open (extend) the footrest and the backrest of the power Comfort Recliner™.
2. Unplug the power socket from the rear of the power Comfort Recliner™.
3. Tip the power Comfort Recliner™ onto its back as shown in *Figure 5*. Because of the power Comfort Recliner™ weight and size, a second person is recommended to assist in this task.
4. Locate the battery to the right of the motor. (See *Figure 6*)

5. Disconnect both battery cord plugs. (See *figure 6*)



6. Remove the two screws holding the battery to the tray. (See *Figure 7*)
7. Remove battery from the power Comfort Recliner™.



8. Install new battery with two screws, plug both cords into the connector cords.
(Assembly should look like *Figure 7*.)
9. Place the power Comfort Recliner™ in the upright position and plug the cord back into the power socket at the back of the power Comfort Recliner™. Then plug the other end of the power cord into the wall outlet.
10. Look under the footrest at the battery; the **LED** at the front of the battery will be flashing **AMBER** when it is charging and solid **GREEN** when it is fully charged. Let the new battery charge overnight. The power Comfort Recliner™ can be used normally when it is plugged in and the battery is charging.

**We know you will enjoy your Comfort Recliner™
by American Leather® and thank you for your purchase.
Register your Comfort Recliner™ warranty
at americanleather.com.**

**DESIGNED &
DELIVERED**
TO YOUR HOME IN
30 DAYS

**AMERICAN
LEATHER**

AMERICANLEATHER.COM

V12.2018

CRAFTED FOR LIFE.™



COMFORT RECLINER™

YOUR GUIDE TO OPERATING THE ULTIMATE POWER RECLINER

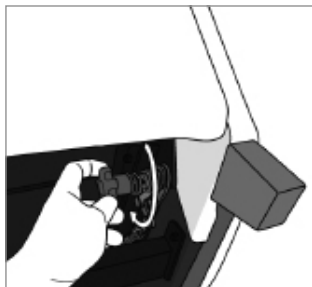
**AMERICAN
LEATHER®**

AMERICANLEATHER.COM

Congratulations on the purchase of your Comfort Recliner™. We want to ensure that you take full advantage of our proprietary Infinity System™! Learn how to make the most of it below.

This product is intended for household/residential use only.

BACK RECLINE



Now it's time to sit down, relax, and enjoy infinite reclining comfort! To find the perfect seating position, sit down and push on the arms to recline. When you recline, the patented[†], weight-balanced mechanism makes the fully independent chair back move with you, allowing you to lean back almost effortlessly and stop in any desired position. Every Comfort Recliner™ is factory-set with the

recommended amount of resistance needed to comfortably push back. However, if you feel like your chair reclines too easily, you can adjust the two tension knobs located beneath your chair to set your preferred amount of resistance.

FOOTREST

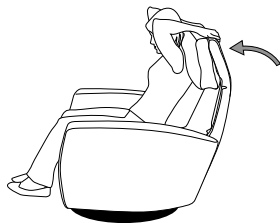


The footrest also has infinite stopping positions, independent from the chair back. To raise the footrest, gently pull back the lever while raising your legs. Simply release the lever to stop the footrest in any position (you must release the lever to lock the footrest in place). To close, simply pull back on the lever again and press down with your feet until the lever pulls forward (this will happen automatically).

HEADREST

The Comfort Recliner™ headrest adjusts to give you the perfect back and neck support. The headrest articulates forward to create that perfect angle for watching television or reading a book. When standing behind the chair, you can change the angle by pressing forward on the outside shell, right behind the head pillow. However, if you are already sitting and want to adjust the angle, place both hands on the solid outside back and pull forward to your desired position.

To return the articulating headrest to its normal position, simply push back with your hands.



We know you will enjoy your Comfort Recliner™ by American Leather® and thank you for your purchase. Register your Comfort Recliner™ warranty at americanleather.com.

U.S. Patent #8882190 and #9504328

China Patent #ZL201280015832X

Additional patents pending.

CRAFTED FOR LIFE.™

**AMERICAN
LEATHER**

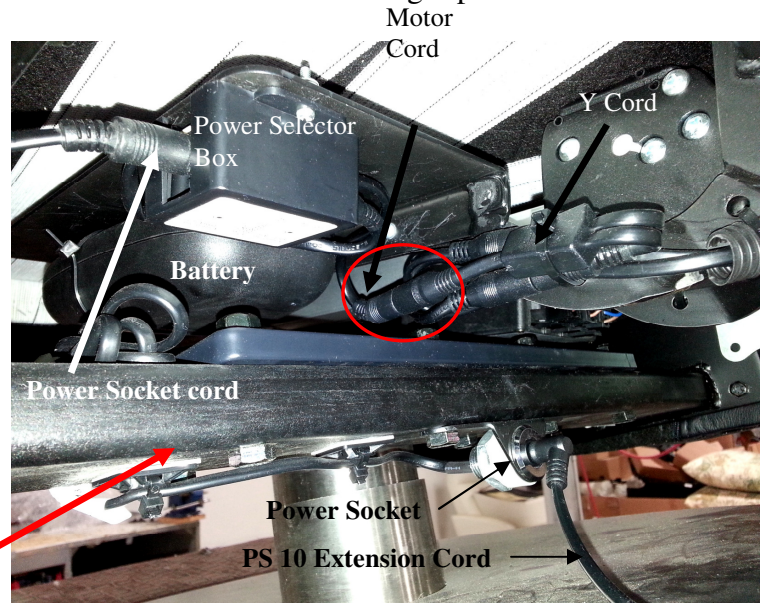
AMERICANLEATHER.COM

**DESIGNED &
DELIVERED**
TO YOUR HOME IN
30 DAYS

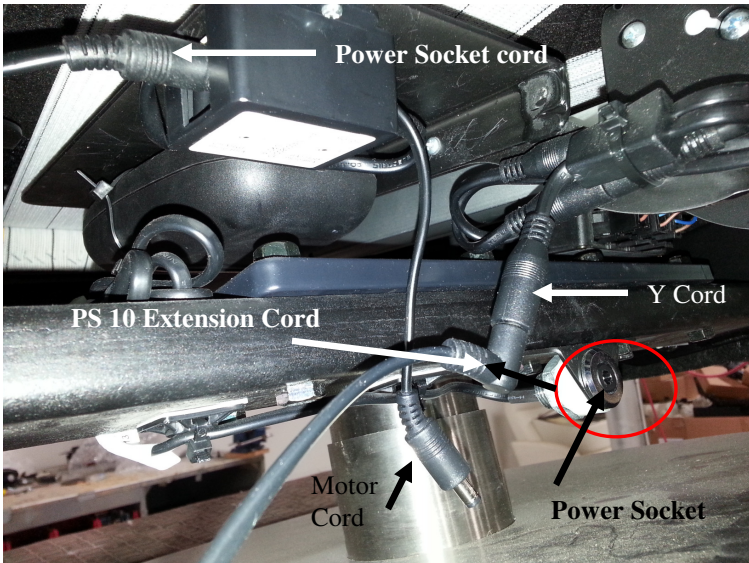
V12.2018



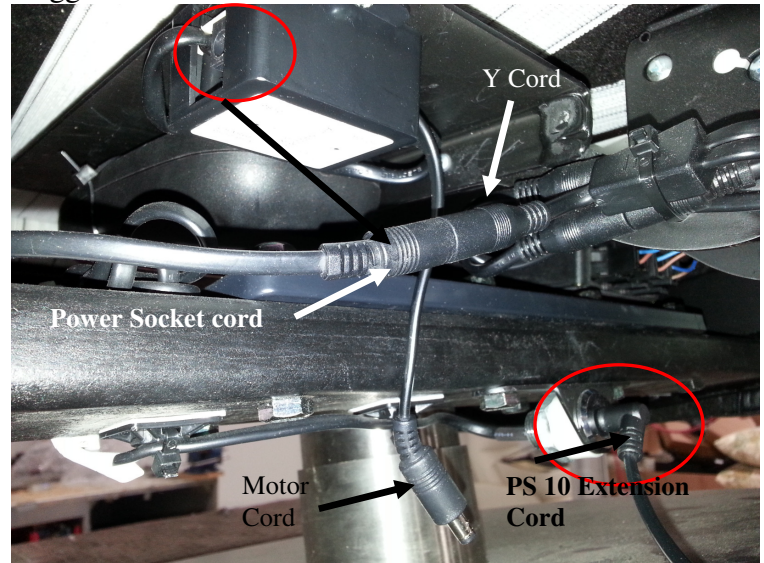
1. Remove Back from Recliner



2. Power system with Battery installed and Transformer Plugged into the wall



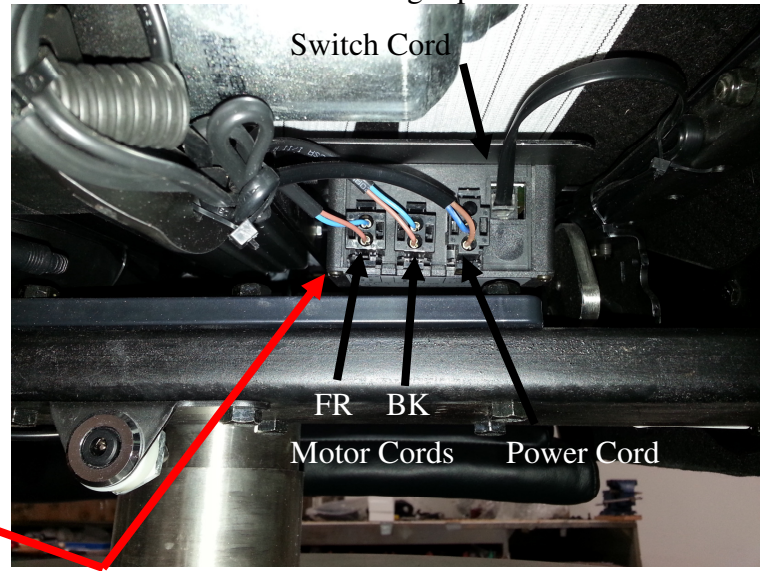
3. Unplug Motor Plug from Y Cord and unplug PS 10 Extension cord from the Power Socket. Plug the PS 10 Extension cord directly into the Y Cord and test the Recliner. If the Recliner operates either the Power Socket or the Power Selector Box are defective.



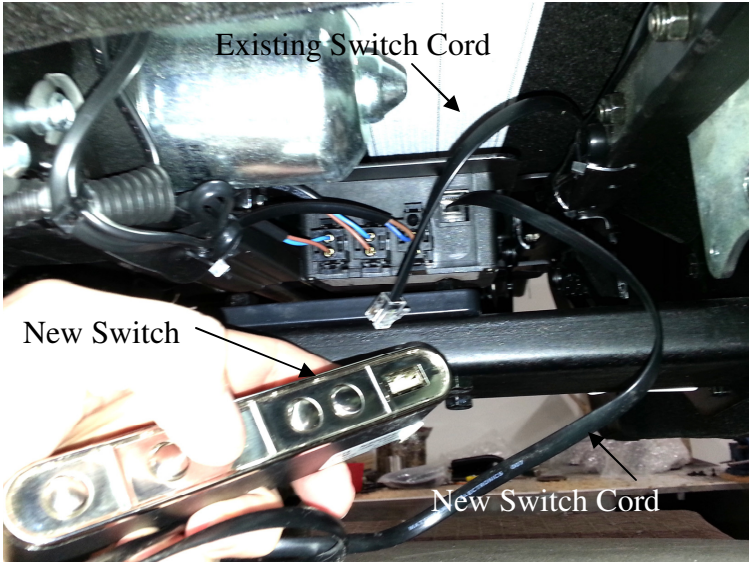
4. Plug the PS 10 Extension Cord into the Power Socket and unplug the Power Socket Cord from the Power Selector Box. Plug the Power Socket Cord into the Y Cord. If the Recliner operates the Power Selector Box Is defective. If the Recliner still does not operate then return the plugs to the position shown in figure 3 and move on to page 2 to trouble shoot the SU04 Box and the Switch.



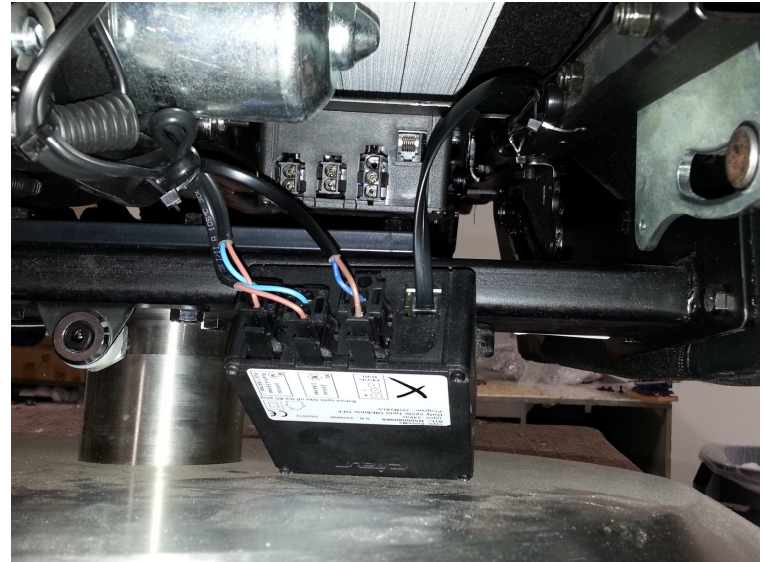
1. Remove Back from Recliner



2. SU04 Control Box



3. Unplug existing Switch Cord and plug in new Switch Cord – Test operation; if everything works replace Switch



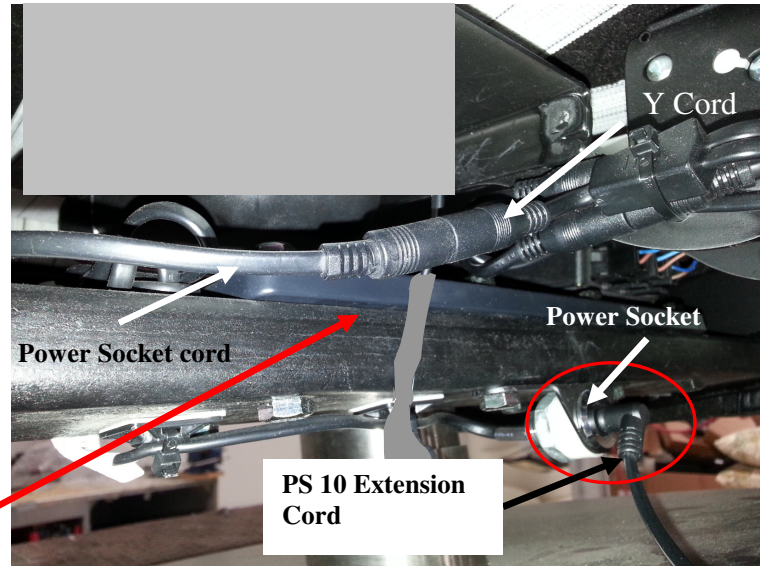
4. If new Switch did not work; Plug old switch, motor, and Power Cords into new SU04 box and test operation. If everything works, then replace the SU04 Box. If it still does not work plug in the new switch cord and test. If the recliner still does not operate then the motors are bad.



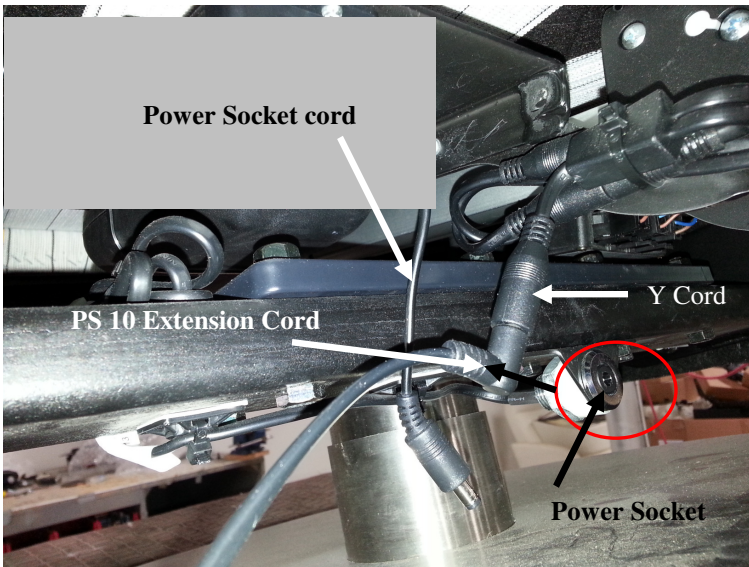
5. To Replace SU04 Box: Remove the two screws/ nylon nuts Holding the Box to the Bracket and replace with the new SU04 Box. Plug in all cords.



1. Remove Back from Recliner



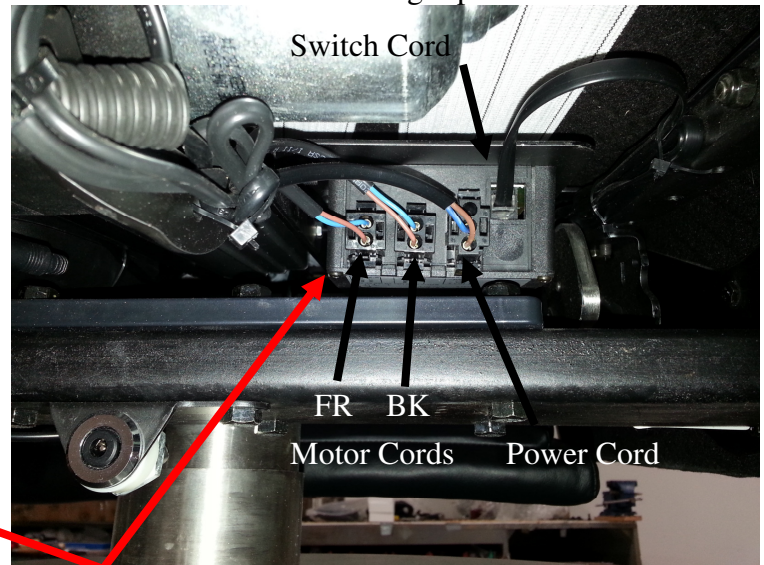
2. Wiring showing the PS10 Extension Cord from the Transformer plugged into the Power Socket, and the Power Power Socket Cord Plugged into the Y Cord



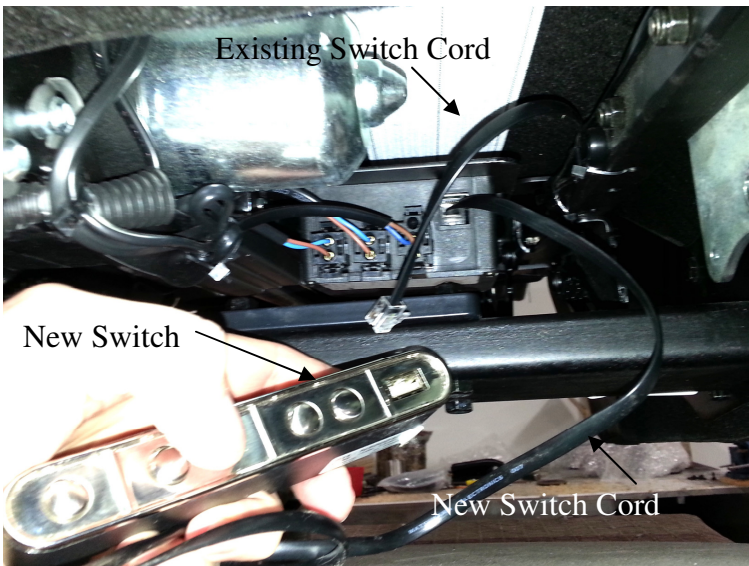
3. Unplug Power Socket Cord from Y Cord and unplug the PS10 Extension Cord from Power Socket. Next plug the PS10 Extension Cord into the Y Cord and test the chair. If the Recliner does not operate then move on to the SU04 And Switch testing instructions below on page 2



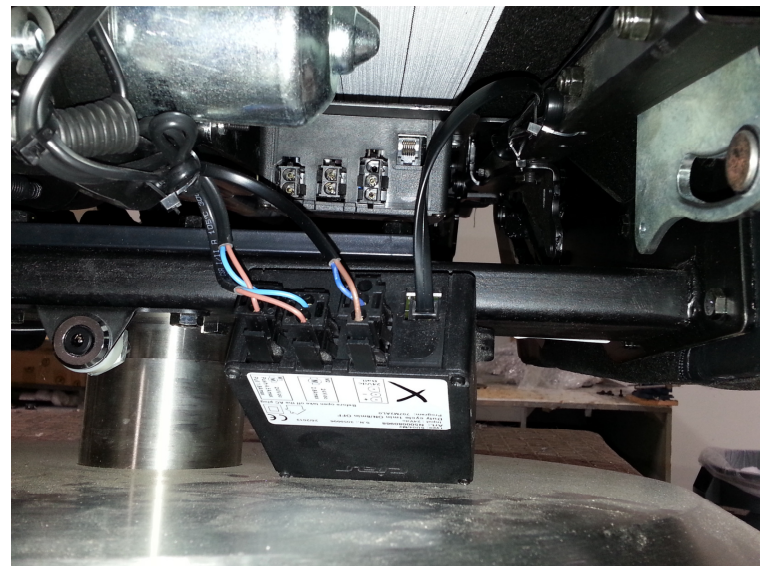
1. Remove Back from Recliner



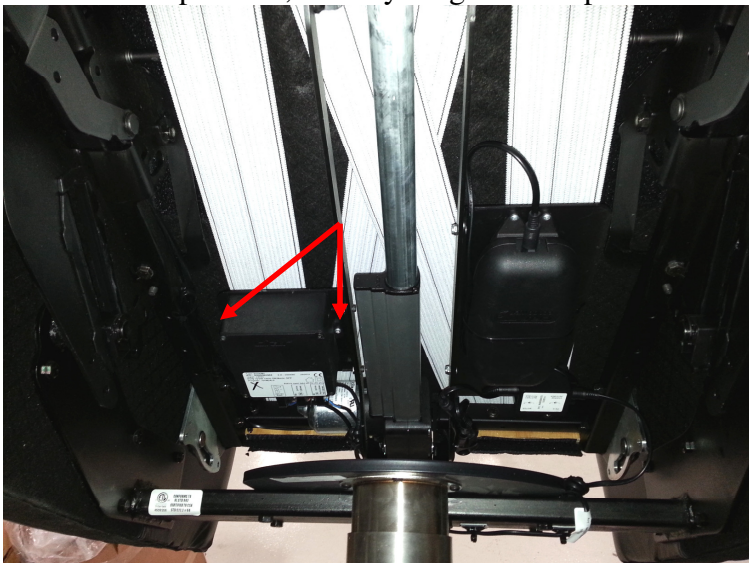
2. SU04 Control Box



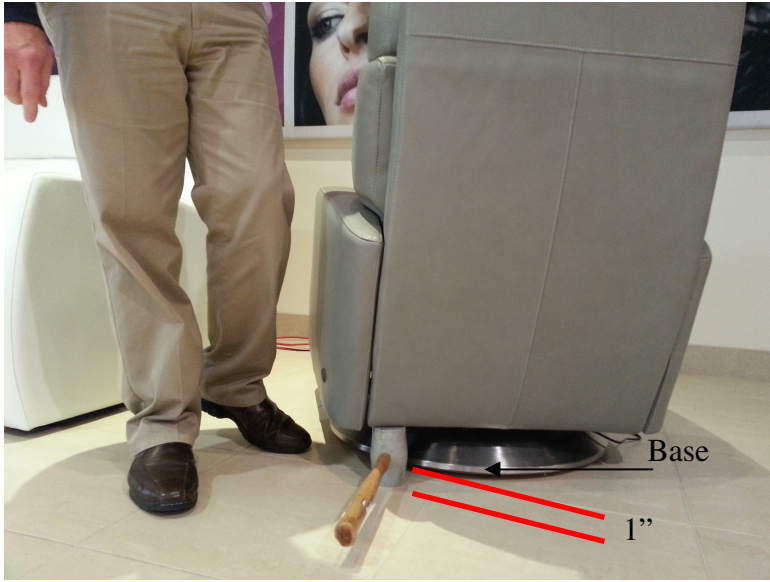
3. Unplug existing Switch Cord and plug in new Switch Cord – Test operation; if everything works replace Switch



4. If new Switch did not work; Plug old switch, motor, and Power Cords into new SU04 box and test operation. If everything works, then replace the SU04 Box. If it still does not work plug in the new switch cord and test. If the recliner still does not operate then the motors are bad.



5. To Replace SU04 Box: Remove the two screws/ nylon nuts Holding the Box to the Bracket and replace with the new SU04 Box. Plug in all cords.



1. Place a block under one side of the Back as shown – The block should raise the Base off the floor by about 1”



2. Press down on the Arm with your knee as shown. Repeat for the other side. Lift Back up and off of the recliner



3. Lift the Back up and off of the recliner



4. Remove the two bolts shown from each Arm.



Make sure towel covers the bottom of the Back Post

5. Slide a Towel between the Arm and the Back Post of the Mechanism all the way to the bottom as shown.

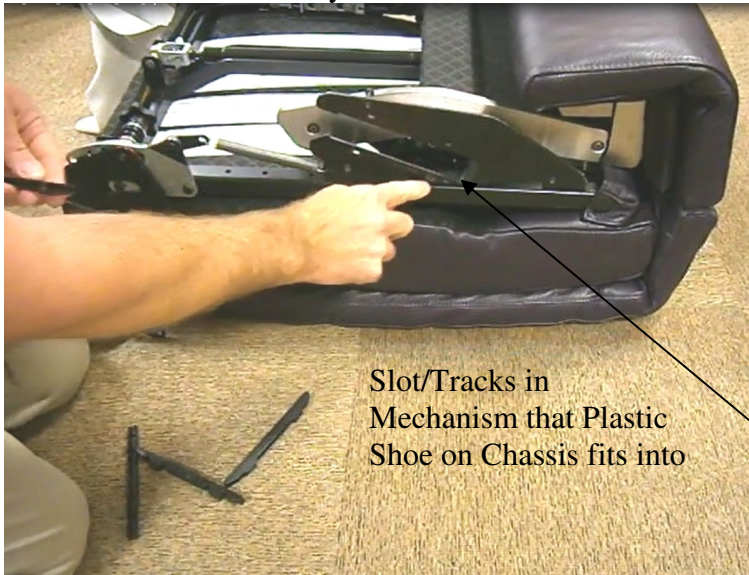
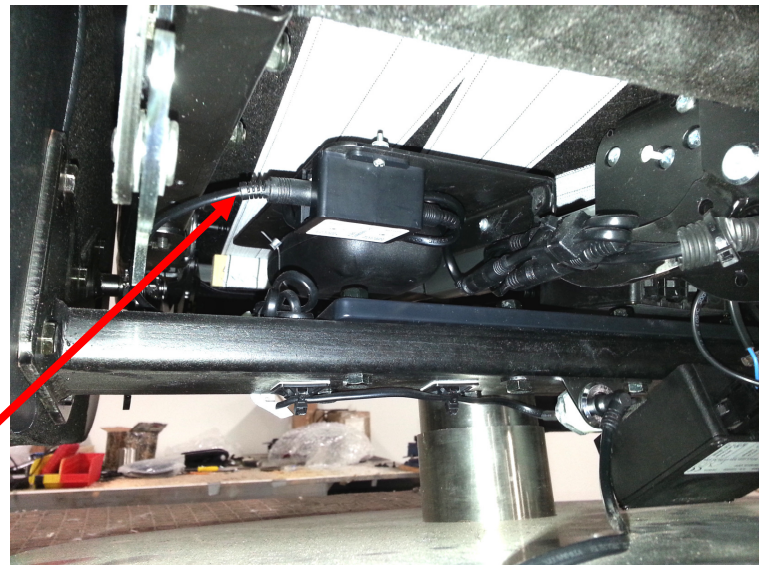


6. Towels shown on both Back Posts. The Towels will protect the Inside Arm Leather from scratches.



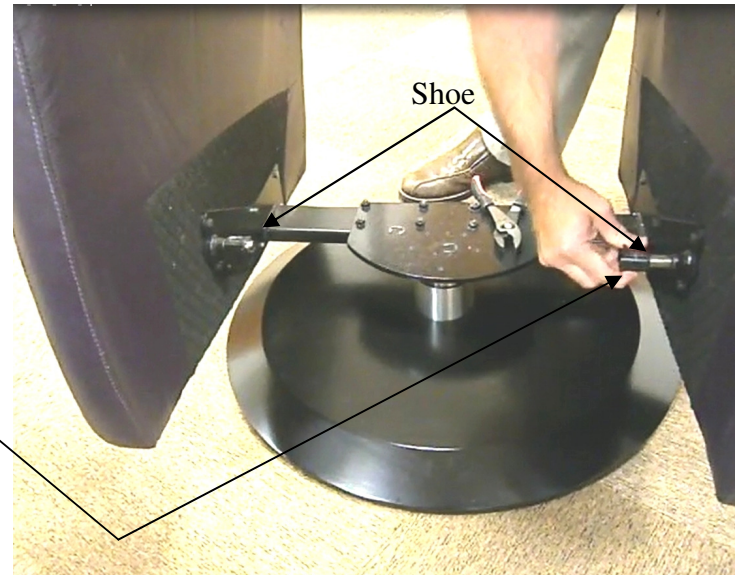
For Powered Comfort Recliner: Unplug Chassis Cord from Seat Assembly BEFORE removing Seat Assembly

8. Push the Seat Assembly forward and out of the Chair.



Slot/Tracks in Mechanism that Plastic Shoe on Chassis fits into

1. Slots with Plastic Tracks will fit over the Plastic Shoes shown on the Chassis during re-assembly



Shoe



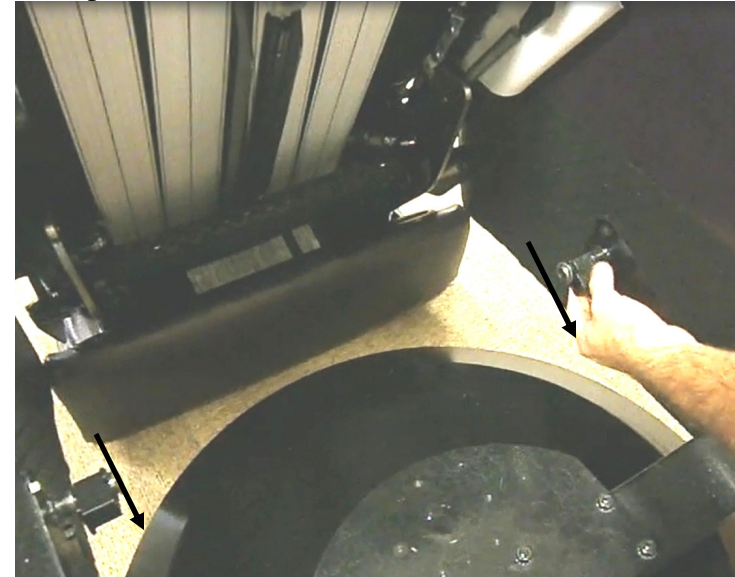
2. Tracks slide onto Shoe during re-assembly



3 Wrap Towels around Back Posts of the Mechanism



4. Carefully tilt Seat Assembly between Arms



5. Tilt Seat Assembly down until the Tracks line up with the Shoes – Long portion of the Shoe should face the rear of the Chair as shown



6. Pull the back of the Seat Frame to slide Tracks onto Shoes until they hit the Rubber Bumpers.



7. Remove the Towels with the seat in the position shown.



8. Start the two Bolts on each side by hand first and then tighten with the Drill.



**For Powered Comfort Recliner:
plug Chassis Cord into Seat
Assembly BEFORE installing the
Back**

9. Line up the Back Posts of the Mechanism with the Back Mounting Brackets.



10. Push the Back upright and press down hard on the top of the Back to set the Spring Clips.



11. Test the Chair by opening and closing it.